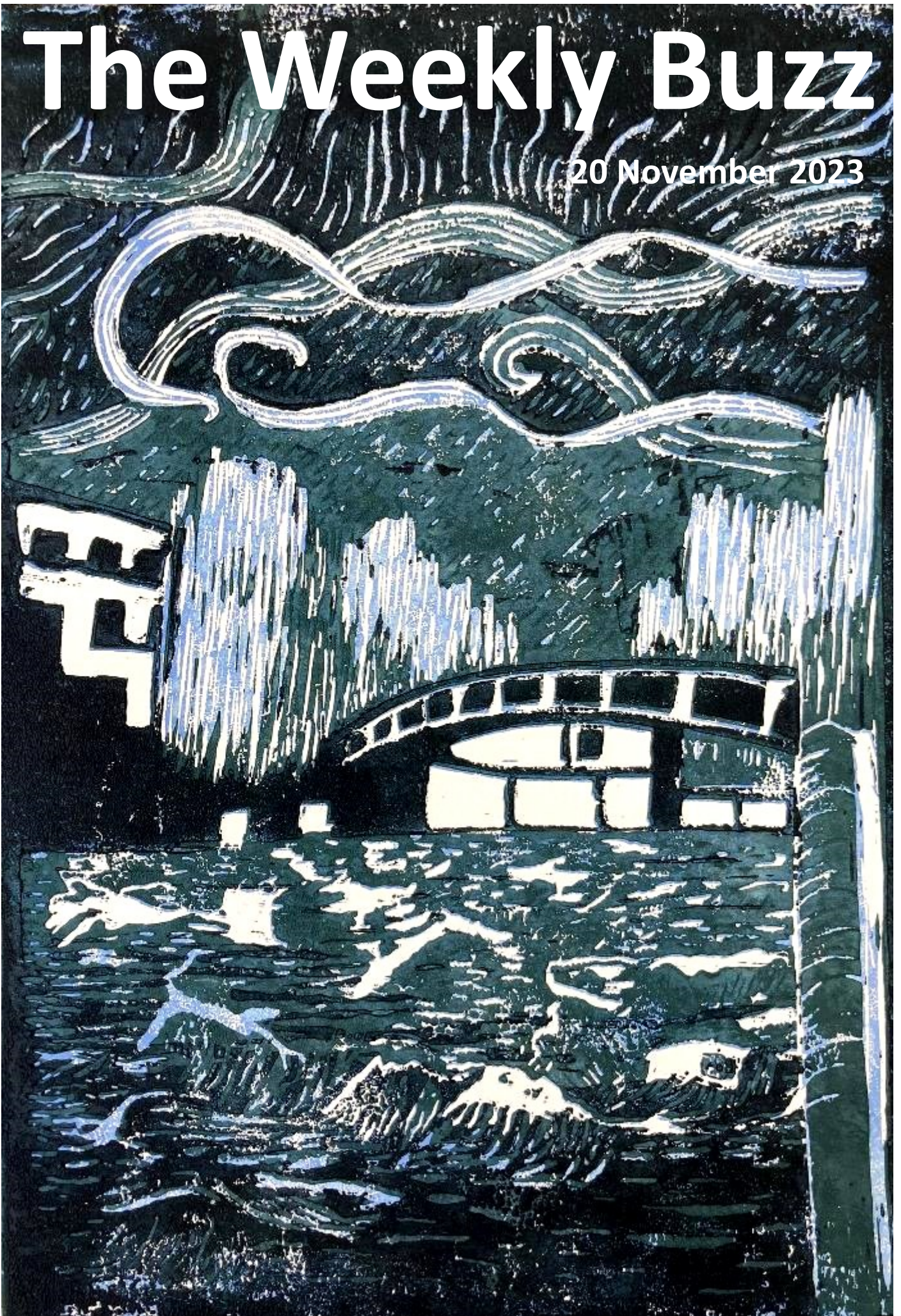


The Weekly Buzz

20 November 2023





Portland
Place
School

Noticeboard

Lunch Menu

w/c 20th November



LUNCH MENU



MONDAY	TUESDAY	WEDNESDAY	THURSDAY	FRIDAY
Soup of the day Leek & Potato with Freshly Baked Bread	Soup of the day Carrot & Coriander with Freshly Baked Bread	Soup of the day Broccoli & Stilton with Freshly Baked Bread	Soup of the day Keralan Cauliflower with Freshly Baked Bread	Soup of the day Pea & Mint with Freshly Baked Bread
Dish of the day Lemon & Ginger Chicken	Dish of the day Rich Beef Bolognaise with Penne	Dish of the day Roast Turkey	Dish of the day Chicken Tikka Masala	Dish of The day Butchers Chicken Sausages with Gravy
Vegetarian dish of the day Tempeh & Grilled Vegetable	Vegetarian dish of the day Lentil & Mushroom Bolognaise	Vegetarian dish of the day Harissa Spiced Cauliflower Steak with Chickpea	Vegetarian dish of the day Spinach Butternut Squash & Paneer Curry	Vegetarian dish of The day Vegan Sausage & Mash with Gravy
Sides Chop Suey Noodles Green Beans Baby Corn	Sides Steamed Broccoli Carrots Rocket & Parmesan Salad	Sides Gravy Roast Potato Green Beans Glazed Carrots	Sides Cauliflower Broccoli Pilau Rice	Sides Mashed Potato Garden Peas Sweetcorn
Keeping it simple bar Pasta & Jackets with a choice of 2 Homemade Sauces	Keeping it simple bar Pasta & Jackets with a choice of 2 Homemade Sauces	Keeping it simple bar Pasta & Jackets with a choice of 2 Homemade Sauces	Keeping it simple bar Pasta & Jackets with a choice of 2 Homemade Sauces	Keeping it simple bar Pasta & Jackets with a choice of 2 Homemade Sauces
Dessert Flapjack Fresh Fruit and Yoghurt	Dessert Fresh Fruit and Yoghurt	Dessert Chocolate Chip Cookie Fresh Fruit and Yoghurt	Dessert Fresh Fruit and Yoghurt	Dessert Reduced Sugar Chocolate Sponge Fresh Fruit and Yoghurt

For allergen information, please ask a member of the team.



Portland
Place
School

Noticeboard

PORTLAND PLACE SCHOOL

DATES FOR THE DIARY

THURS 23 NOV - UPPER SCHOOL
CHAMBER CONCERT, PPS HALL, 5.30PM

TUES 5 DEC - CAROL SERVICE, ST
MARYLEBONE CHURCH AT 11:00

MON 11 DEC - CHRISTMAS CONCERT,
REGENT HALL AT 18:30

FRI 15 DEC - END OF TERM

Details to follow





Portland
Place
School



Noticeboard

PARENTS EVENINGS (VIRTUAL)

NOVEMBER '23
YEAR 6&7: 6TH
YEAR 9: 13TH
YEAR 10: 20TH
YEAR 8: 27TH

YEAR 11: 29TH JAN '24



Portland
Place
School

Noticeboard

THE PRIDE CLUB

Every Friday at
8.30am in Room 23

A safe space for
LGBTQIA+ and allies to
meet, learn and get
support.



Portland
Place
School

Noticeboard

Upper School Chamber Concert

Thursday 23rd November 2023

PPS Hall, 5:30-6:30pm

Refreshments provided

PORTLAND
PLACE
SCHOOL



Portland
Place
School

Noticeboard



Children, Parents & Carers in years 7-9

Please join us at Somerset House for an evening of Ice Skating

4th December the 6pm session

Meeting at Somerset House at 5.30pm

Please book tickets direct from Somerset House

More Details



More details on Classlist!

We look forward to seeing you there!

The Parents Network

Somerset House





Portland
Place
School

Noticeboard

PLEASE JOIN US / NO NEED TO RSVP!

Portland Place School Carol Service

**TUESDAY 5TH DECEMBER 2023
11.15AM-12.15PM**

**ST MARYLEBONE PARISH CHURCH
17 MARYLEBONE ROAD, NW1 5LT**

**REFRESHMENTS & MINCE PIES WILL FOLLOW AT
PORTLAND PLACE SCHOOL, 56-58 PORTLAND PLACE, W1**



Portland
Place
School



Noticeboard



PLEASE JOIN US FOR
OUR PORTLAND PLACE
SCHOOL

Christmas Concert 2023

**MONDAY 11TH
DECEMBER
6.30PM-8.30PM**

Regent Hall
275 Oxford St, London W1



Portland
Place
School

Noticeboard



ROYAL COLLEGE OF MUSIC

London

PATHWAYS TO PERFORMANCE

Learn from some of the top music educators in the world – exclusively available for Inspired students.



Learn from a Royal College of Music verified teacher:

- Take one-on-one lessons with a teacher from the world's top-rated conservatory.
- Select instruction designed to be your sole private lessons or a supplement to your current lessons.
- Achieve your specific personal goals.
- Learn on Forte, the industry-leading music education platform featuring high-definition audio.
- Perform in recitals attended by RCM teachers and administrators.

About the programme:

- Each package includes six one-hour private online lessons with an RCM teacher.
- Lessons available for most Western classical instruments, including voice.
- Registration accepted on a rolling basis.
- Participants are eligible to receive a certificate of completion issued after the third package of lessons.

£700

per lesson package

Learn more & register at
fortelessons.com/inspired

In partnership with:

inspired forte

Questions? Email
programs@fortelessons.com



Portland
Place
School

Noticeboard

Motivation & Inspiration

At Portland Place School we encourage all of our students to build their resilience and learn how to cope with any challenges they might experience on their learning journey.

Here are a few self-talk statements that can make a big difference to the students' resilience and confidence.

Thank you for your ongoing support.

Ms Florea

BEST 8 WAYS TO BUILD RESILIENCE

- 1** I have resilient adults around me
What you model matters
- 2** I am good at some things and need to work on others
Find and celebrate strengths
- 3** I am hopeful and positive even when it's tough!
Teach optimistic thinking to power success
- 4** I can cope with change
Build capacity to be adaptable and flexible
- 5** I can practise to achieve my goal
Connection to meaning and purpose fuels the many steps to mastery
- 6** I have people who help me to shine
Resilience is supported by people who mentor, guide and model
- 7** I can learn from mistakes and solve problems
Problem solving and taking action leads to self-improvement
- 8** I am me – and that's enough
Self-acceptance builds the capacity to embrace strengths and accept challenges



Portland
Place
School

Noticeboard

The Weekly Buzz

18th December 2023





Portland
Place
School

Noticeboard



‘FESTIVE’ INTER-HOUSE ART COMPETITION

*Your chance to secure your work on the
Front Cover of The Weekly Buzz for the
‘FESTIVE’ final issue this term!*

AND...

***Win loads of points for your House!!
So go! Get drawing!***

- One entry per student—a festive front cover
- Must be in A4, portrait not landscape, and submitted to Miss Dever in Art Studio 1 by **Friday 1st December**.
- Your best work please!
- The winning entry will be judged by Miss Dever and Mr Lee **w/b 4th December**.



Portland
Place
School

Noticeboard

MAXWELL'S STUDY SKILLS "REVISION"

WHAT DO WE MEAN BY REVISION?

Revision is getting yourself ready for your tests by reviewing what you already know, refreshing your memory and catching-up

WHY REVISE?

It improves your confidence, it will give you better exam results, it improves your study techniques, and your ability to tackle questions

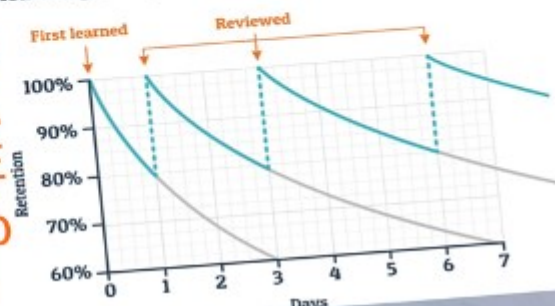
SHORT TERM MEMORY WILL LAST FOR MINUTES BUT LONG TERM MEMORY WILL LAST FOR YEARS. REVISE THE MATERIAL FOR IT TO BE IN YOUR LONG TERM MEMORY.

WHAT DOES REVISION INVOLVE?

Becoming familiar with the subjects' content, practising key skills, answering practice questions
...

IF YOU REVIEW THE MATERIAL OFTEN, IT WILL KEEP THE KNOWLEDGE CLOSE TO 100%

Typical Forgetting Curve for Newly Learned Information





Portland
Place
School

Noticeboard

MAXWELL'S STUDY SKILLS "REVISION"

- C**onverting words and ideas into pictures
- R**ereading your notes
- U**sing mnemonics
- M**ind-maps
- P**owerpoint slides and questions
- E**xam questions practice
- T**est yourself
- S**pace out your revision



useful links

quizlet.com
century.tech
bbc bitesize

Flash Cards



**YOU CAN ALSO CREATE
REVISION TIMETABLES
TO HELP YOU ORGANISE YOUR WORK
AND SEE HOW MUCH
HAVE YOU DONE AND HOW
MUCH IS LEFT**



**YOU CAN USE
FLASH CARDS FOR REVISION,
PAPER OR ONLINE**

DON'T DO CRAMMING OR CRUMMING

**It will make you forget
things and feel very
stressed**

CRUMPETTING IS GOOD ❤️





Portland
Place
School

News

A huge thank you to our
Science Ambassadors
(Maxwell, Jamaal and Talia)
for helping during our
school Open Morning on
Saturday!

Ms Silcocks

Science Ambassadors



Portland
Place
School

News





Portland
Place
School

News



THE WALL OF KINDNESS

Towa in Year 7 for helping Jacob access his Century Tech and holding the door open for others when they had their hands full! Towa is always enormously polite and kind to everyone around him

Thank you to Jet for spending last lunchtime with me—Alex P – Hybrid Y11

*Thank you to Mr Paul Jones. He is super supportive of my situation at the moment. and has been helping me so much in media even though I find it so difficult.
Jude Y11 Hybrid.*

Thank you to Ms Dever, Mr Lee, Ms Vargas, and Mr Tomlinson for going the extra mile to support our Hybrid students this week. Ms Baig

Thank you to Stan for showing kindness towards Gleb by lending him drawing equipment.

I was also very impressed to see Taisei helping Alexander during lunch.

Ms Florea

A huge thank you to our Science Ambassadors (Maxwell, Jamaal and Talia) for helping during Open Morning on Saturday! See photos inside this issue! Ms Silcocks



Portland
Place
School

News

DIGITAL DRAWING ENRICHMENT



Wrapping Paper

It's that time of year again folks! Yep, you guessed it...Sir Carl, Ms Osborne and Miss Boyle all have their birthdays this half term.

But others might be celebrating: belated Diwali, Jain New Year, Hanukkah, Guru Gobind Singh's Birthday, St Andrew's Feast Day, Yule, and Christmas and many more reasons to gift in the next six weeks.

This week, our Digital Drawing crew had their first week designing wrapping paper and did a sterling job. Well done Toby, Ray, Stan, and Tom.



Stanley Kenyon and Ray Jones trying out the new beanbag arrangement in the Art Studio. Designed for improved focus and relaxation when drawing for extended periods.



...and remember folks, gifting doesn't have to cost a fortune!

I once received a second-hand orange from a student and was over the moon. (Although, I'd have been even happier if it had been wrapped in an original Stanley Kenyon or a Toby Takeyama wrapping paper design).



Portland
Place
School

News

Tall Buildings of London: Tower Bridge



This week our Tall Buildings of London enrichment brought us to Tower Bridge!
This 1894 built was such an impressive sight as we arrived with the sun shining on it,
right between the Shard and the Tower of London.

This was probably the scariest so far as we walked through the high pathways above the
water. We could see boats, cars, buses and people underneath our feet! Our tour guide
explained to us that the glass could hold the weight of an elephant or two black cabs so
that reassured us! Miss Florea was still a bit hesitant, but she walked it anyway with a
growth mindset.

We then visited the beautiful engine rooms and got some ice-cream before heading
home. Another successful day, that felt very inspirational!

Mr Lalande





Portland
Place
School

News





Portland
Place
School

News

POLKA DOT
PANTOMIMES

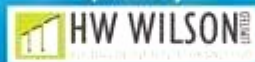
Polka Dot Pantomimes in association
with Thurrock Council present

STARRING
DESTINI CLARKE

Destini (Y10 Hybrid School) has been selected to take part in a pantomime this year. Here she is, the star of the show! We are very proud of her achievement!

Jack and the Beanstalk

Sponsored by



1 December 2023 - 7 January 2024

THAMESIDE THEATRE

Orsett Road, Grays, RM17 5DX

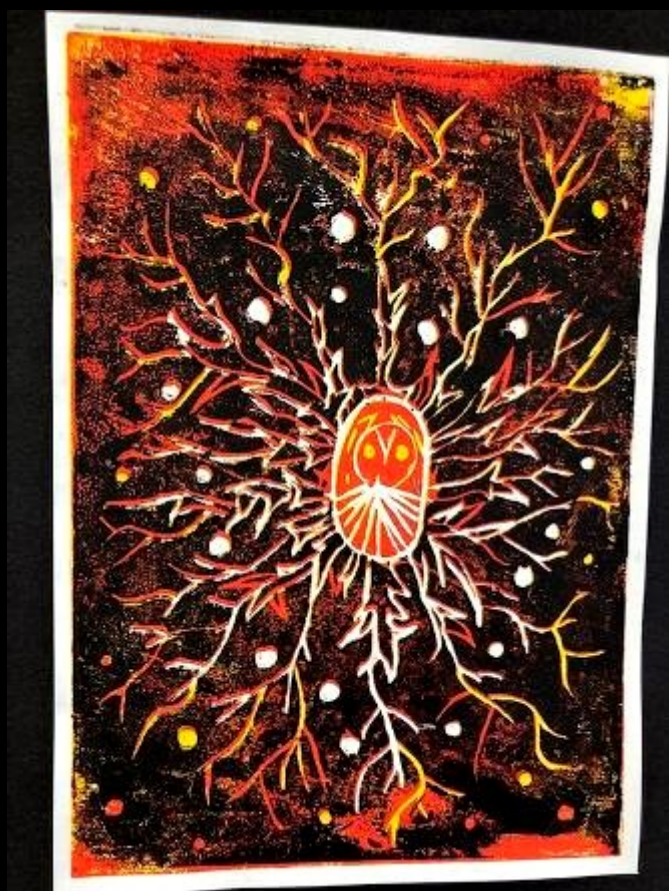
Box Office: 0345 300 5264 | thurrock.gov.uk/theatre



BEST THEATRE IN ESSEX
2023 WINNERS

thurrock.gov.uk

Art



Jemima Y11





Portland
Place
School

News

ON WEDNESDAY OUR CATERING TEAM TREATED US TO A FUN CORN POP UP EVENT DURING LUNCH SERVICE...

THERE WERE 3 DIFFERENT FLAVOUR THEMES: THE ITALIAN, THE AMERICAN GUMBO AND THE SUSHI INFUSION CRUNCH. YUM!

Corn pop dunkers

GOOD NEWS: THIS IS THE FIRST OF A SERIES OF POP UPS. WATCH THIS SPACE!!





Portland
Place
School

News

Year 8 Art—Objects and Viewpoints

We don't often work collaboratively in Art, but when we do it's great fun.

This week, Miss Dever's Y8 class worked in pairs or groups to compete with each other to create a drawing based solely on the descriptions from their partners.

It was great to see this class demonstrating outstanding teamwork and patience as they used Art specific language to help their partners with their work. This was a very difficult task and they worked impeccably.



The painting pictured and used for this task is titled 'An Allegory of the Vanities of Human Life', by 17th Century Dutch Vanitas painter, Harmen Steenwijck.



The big reveal! The moment of truth when they could see the original Vanitas painting versus what they had drawn.



Well done to Taisei and Gleb, whose work was voted the best and earned them house points for Cavendish and Langham. Positive points for T, who went the extra mile and translated descriptive words into Russian on his iPad to help his EAL partner, and promoting equality in the classroom.



Portland
Place
School

News



'Destination Dance' Prize Winner: Mia

Congratulations to Mia in Year 9 who won gold and 1st prize for her solo dance as well as gold and silver awards with her school for group dance.

More importantly she won jury's special prize as Destination Dance 'Dance Idol Winner' and will be performing in the opening number of the international final next year.



Year 7 — Wallace Collection Visit

Wallace Collection

On Tuesday, Year 7 walked to the Wallace Collection (one of London's best kept secrets!) to engage in a creative writing workshop on myths and legends.

The group viewed priceless works of art whilst gaining inspiration for their current unit of work on Dystopian Fiction. They were lucky enough to be led around the gallery by a published author who had all sorts of interesting stories and anecdotes to share about the objects in the collection.

The gallery is free to visit, so we encourage pupils to return with their families and enjoy this unique place!

The English Department



Portland
Place
School

News





Sonny / Queen Elizabeth 10k



We have an athletic star amongst us! Sonny (Y11 Hybrid School) took part in the Queen Elizabeth 10k on 12th November at the Olympic Park and came 19th out of thousands. Well done, too, to Dad Ollie for taking part and coming 297th!

Sonny also competed in Cumbria two weeks ago and came 6th in the 10k there!

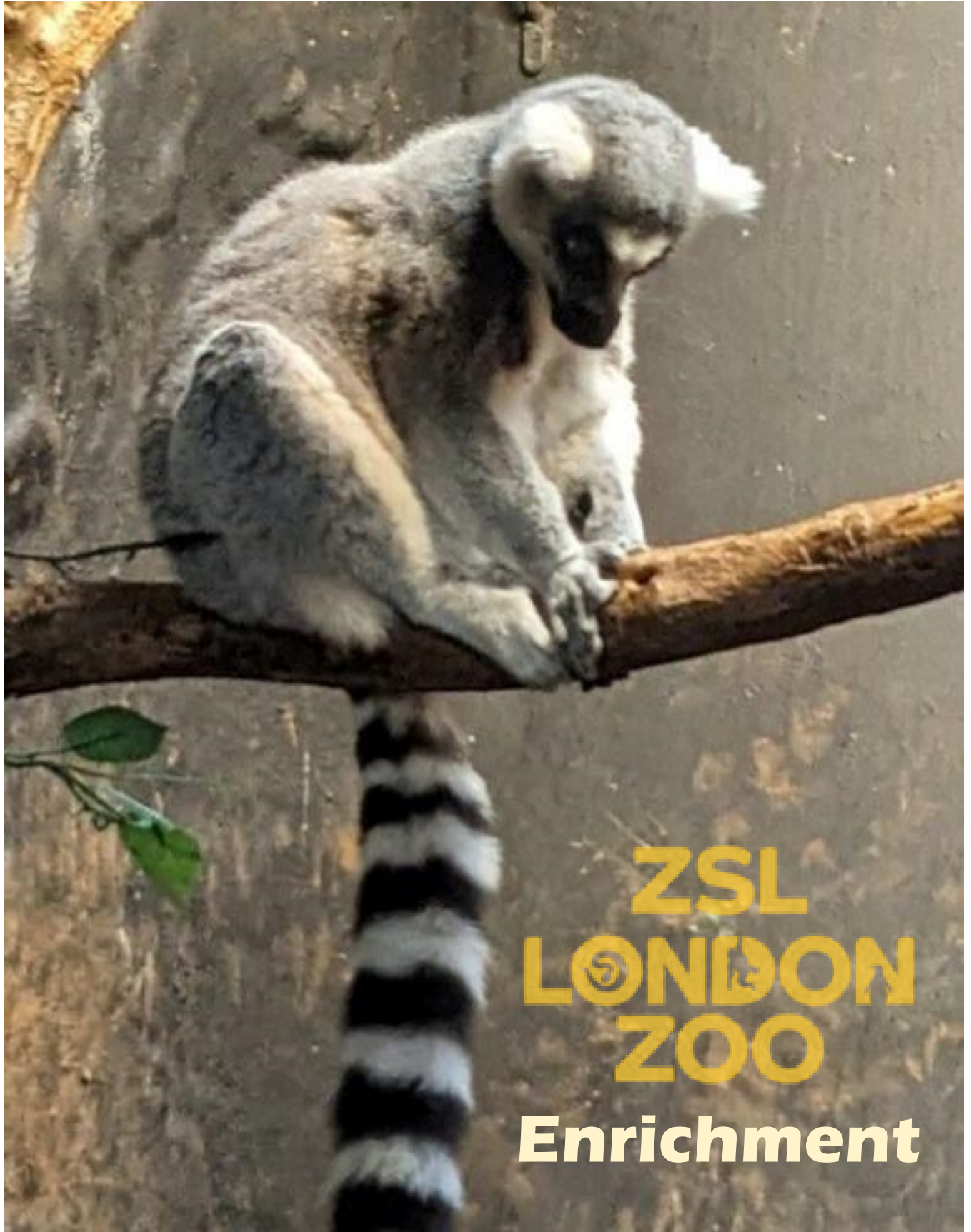
Congratulations Sonny!

SONNY BRENDON	
3671	
10k	
Gender : Male	
Category : Senior Men	
Status : Finished	
Club :	
★ Add To Favourites	
Gun Time	
00:41:18	
OVERALL	CATEGORY
19/451	10/126
GENDER	
18/260	
Chip Time	
00:41:11	
OVERALL	CATEGORY
20/451	10/126
results.runthrough.co.uk	



Portland
Place
School

News



**ZSL
LONDON
ZOO**

Enrichment



On 3rd November, 7 PPS students inaugurated our cycle of educational visits to London ZOO. We followed the Blue Route, meeting and greeting tigers, monkeys, farm animals, camels. We also participated in a workshop showing how animals are taken care of at London ZOO.

Enjoy reading!

GORILLA- FACTS:

- Gorillas can weigh up to 200kg, which is around the weight of two men.
- Gorillas share 98.4% of their DNA with humans.
- Gorillas are herbivorous and mostly feed on leafy greens.





Portland
Place
School

News

ZEBRAS- FACTS:

- Each zebra has a unique stripe pattern, some even have spots
- Zebras are seriously chatty animals

ZEBRAS- FACTS:

- A group of zebras is called a dazzle
- Zebras spend 60% of their time eating





Portland
Place
School

News

LEMURS- FACTS:

- The ring-tailed lemur's scientific name *lemur catta* translates as 'ghost cat'.

- In lemur society, the females are in charge. They have the pick of the food and choose their mates.

LEMURS- FACTS:

- Lemurs have flexible hands with opposable digits but their grasp is quite weak, which means eating large chunks of apple can be a challenge.





Portland
Place
School

News

Documenting: Looking at devices used for animal photography. Identifying animals on the photos

Threats to Biodiversity: exploring the levels of acidity dangerous to water-based animals

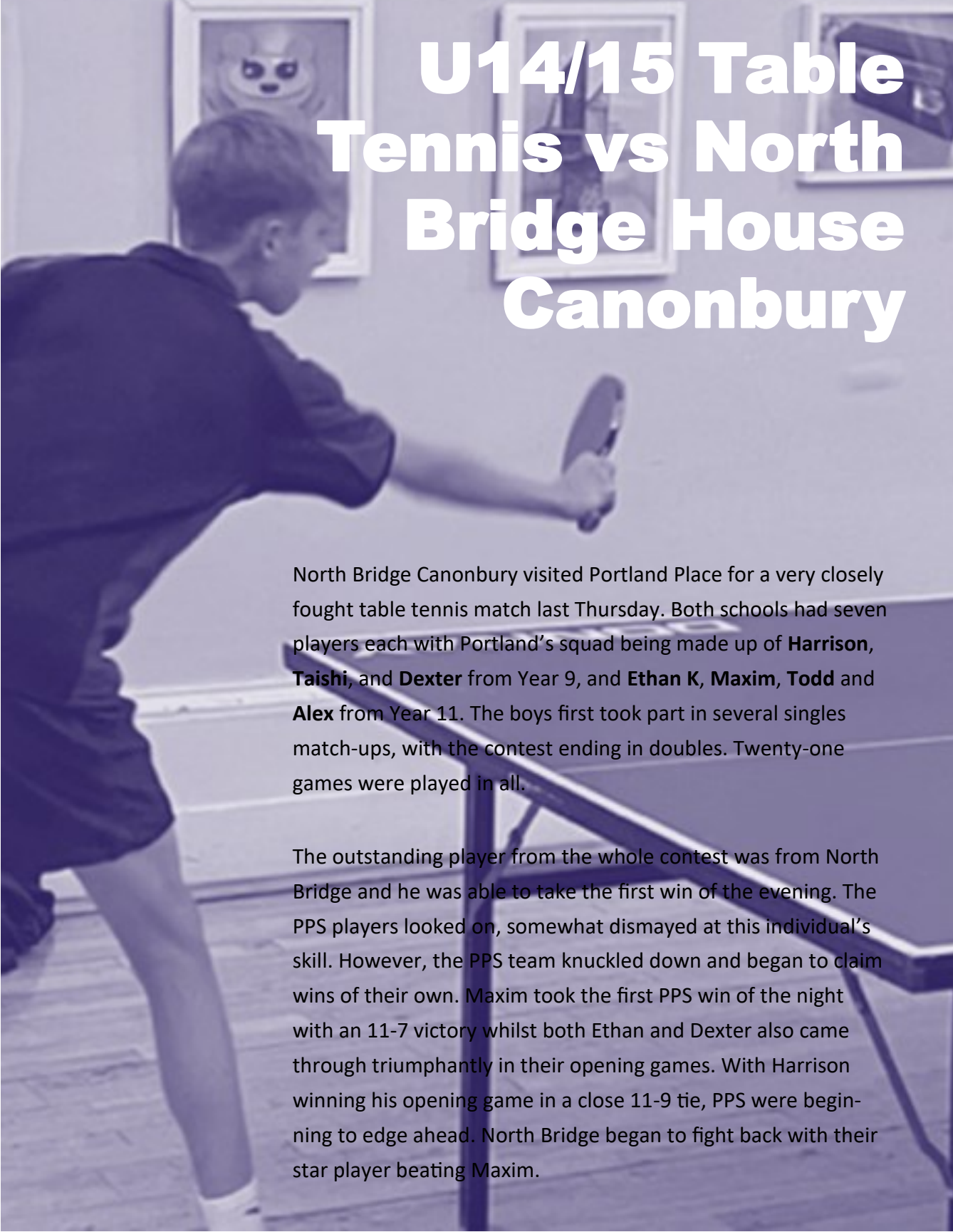
Enrichment: exploring man-made tools which encourage the animals to play and challenge their environment

Research: exploring various types of animal cells





Sports report



U14/15 Table Tennis vs North Bridge House Canonbury

North Bridge Canonbury visited Portland Place for a very closely fought table tennis match last Thursday. Both schools had seven players each with Portland's squad being made up of **Harrison, Taishi**, and **Dexter** from Year 9, and **Ethan K, Maxim, Todd** and **Alex** from Year 11. The boys first took part in several singles match-ups, with the contest ending in doubles. Twenty-one games were played in all.

The outstanding player from the whole contest was from North Bridge and he was able to take the first win of the evening. The PPS players looked on, somewhat dismayed at this individual's skill. However, the PPS team knuckled down and began to claim wins of their own. Maxim took the first PPS win of the night with an 11-7 victory whilst both Ethan and Dexter also came through triumphantly in their opening games. With Harrison winning his opening game in a close 11-9 tie, PPS were beginning to edge ahead. North Bridge began to fight back with their star player beating Maxim.

Sports report




With two further losses in succession, Dexter stepped up to face North Bridge's best player in what was the best game of the night. Pushing him all the way, Dexter eventually lost out in a tie-break 15-17, but had played superbly. Portland recorded two thumping wins, with Harrison coming through 11-1 and Maxim winning 11-2. These were the final singles games and the teams began a series of doubles matches. Harrison and Todd succumbed 7-11, but Maxim and Ethan won 11-8, as did Dexter and Harrison. With the scores tied 10-10, Alex and Taishi stepped-up for the final game of the evening and recorded a tense 11-9 victory to give Portland the overall win.





Sports report



On Thursday 9th of November, PPS went to the Queen Mother Sports Centre to play Fairley House School. As our captain, **Lily** won the toss up and chose to take the first centre pass. The game started with a bang and the girls went straight into the lead with a quick goal from **Esther**. The ball was played effortlessly down the court and we saw some great passing and catching from **Beatrice** who was great in wing defence and wing attack.

U13 Netball vs Fairley House



Sports report

Rosie, Farida and Lucy were ready to intercept some fabulous balls and keep PPS on the attack. **Lily** worked hard as a centre. I must say their confidence was soaring and every single ball seemed to land effortlessly into the net to our delight. In defence, **Farida** and **Millie** worked really hard to keep the ball out of the opposition's goal line and won some great interceptions on the defensive line. On the whole, the girls excelled themselves and performed to a very high standard winning the game 10-2, conceding only the 2 goals. **Esther** was crowned the player of the match to her delight!!

Final Score: Fairley House 2 – PPS 10

Well done to the girls on an absolutely amazing performance, Keep up the great work!
Miss Boyce 😊



U14 Football vs Harrodian B

Portland's Year 9's journeyed south of the river last Friday to face Harrodian School in Barnes. The previous week they had lost out to Kew House and a few positional changes had been made as a result of their improved second half performance. **Harrison** was moved forward into the midfield, whilst **Tyler** was pushed up onto the right wing, allowing **Tom** to move into the centre of midfield. With **Humphrey** up top, the PPS squad knew that their job was to supply him with decent ball and this was achieved in the opening minutes as he chased forward on the right only to be scythed down in the box to win his team a penalty, which he calmly passed into the left netting of Harrodian's goal.

Harrodian responded with a well-executed move that begun on the right and ended with their unmarked left midfielder finishing off neatly at the back post. Portland wasted no time in re-establishing their lead as Tyler darted down the right wing and put Humphrey through on goal to double his personal tally. Before the break, Tom was able to make it three for the away team as he received a ball pulled back from the by-line to coolly pick his spot.

It was Harrodian who struck first in the second half, capitalising on a spill from Dexter who had dived low to gather a cross. Harrodian's tails were up, and PPS were guilty of playing too high, leaving them undermanned in the midfield. A tactical reset saw them reassert their hold on the game and soon after Humphrey was able to complete his hatrick! With Spike pushing forward in attack, PPS claimed their fifth as he skipped past a lunging defender and saw his shot deflected past the keeper.

This was some of PPS Year 9's best football and they deserved their 2-5 victory.

Man of the match: **Harrison**



Portland
Place
School

Sports report



YEAR 7/8 HOUSE NETBALL REPORT

On Tuesday 14th November pupils in year 7 & 8 competed in their much-anticipated house netball competition! It was a thoroughly enjoyable afternoon with a number highly entertaining matches between the houses. Pupils played some outstanding netball...There were excellent attacking moves, important interceptions, fast paced passing and some very tight matches! There was a great atmosphere throughout, and games were played in good spirit with lots of support from the sidelines! The tournament results were as follows:

Round 1

Cavendish 0 vs 4 Devonshire (Lucy x3, Oisin x1)

Langham 0 vs 3 Wigmore (Helena x3)

Round 2

Devonshire 0 vs 0 Wigmore

Langham 1 vs 3 Cavendish (Esther x1, Lucy x2)

Round 3

Langham 0 vs 0 Devonshire (Esther x1)

Cavendish 1 v 1 Wigmore (Helena x1, Lucy x1)

CAVENDISH WIN HOUSE NETBALL!

Final result

1st - CAVENDISH

2nd - WIGMORE

3rd - LANGHAM

4th – DEVONSHIRE

Top Point Scorers

Lucy – 6

Helena – 4

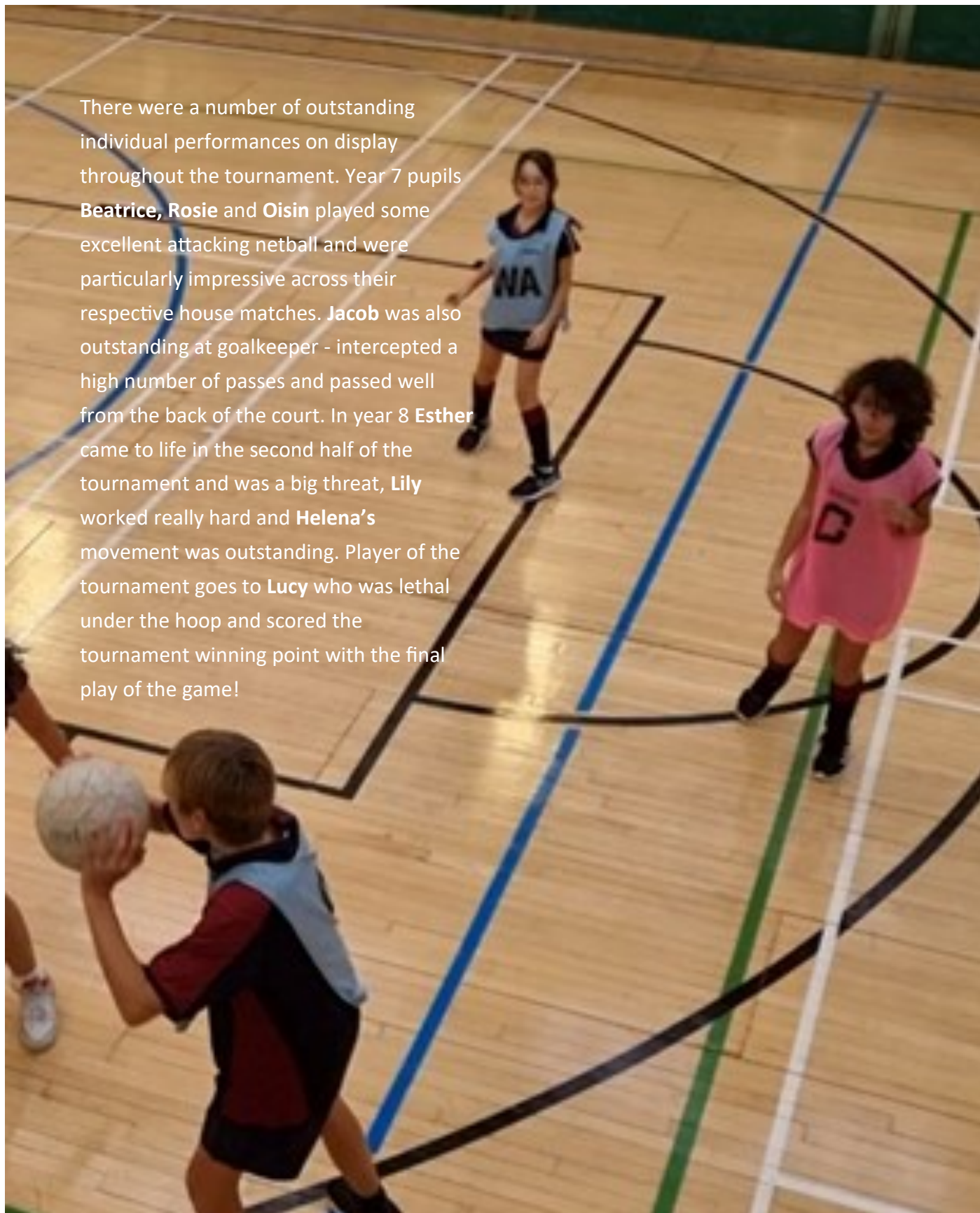
Esther - 2



Portland
Place
School

Sports report

There were a number of outstanding individual performances on display throughout the tournament. Year 7 pupils **Beatrice, Rosie and Oisin** played some excellent attacking netball and were particularly impressive across their respective house matches. **Jacob** was also outstanding at goalkeeper - intercepted a high number of passes and passed well from the back of the court. In year 8 **Esther** came to life in the second half of the tournament and was a big threat, **Lily** worked really hard and **Helena's** movement was outstanding. Player of the tournament goes to **Lucy** who was lethal under the hoop and scored the tournament winning point with the final play of the game!





Portland
Place
School

Sports report



Next Week's Clubs & Fixtures

Mon 20 th Nov:	Table tennis club, PPS Hall, 1.10-1.45pm, Year 8 football vs Maida Vale, Regent's Park, 2.00pm Football club, Westway, 3.50-5.40pm Karate Club, PPS Hall, 4.00-5.00pm
Tue 21 st Nov:	Year 7 football vs Maida Vale, Regent's Park, 2.00pm
Wed 22 nd Nov:	GCSE PE Revision Club, G21, 1.10pm – 1.45pm Year 11 football vs Maida Vale, Regent's Park, 2.00pm
Thu 23 rd Nov:	Year 9 football vs Maida Vale, Regent's Park, 2.00pm Running Club, Regent's Park, 12.50-1.30pm Weight Training Club, PPS changing rooms, 12.50-1.30pm Basketball Club, Seymour Centre, 4-5.15pm
Fri 24 th Nov:	Year 10 football vs Maida Vale, TBC

Enrichment — Second Half of Autumn Term 2023

Activity	Staff	Room
Additional Maths	TTO	G21
Climbing	AZE & LVW	Offsite—meet outside PP 13:30
Digital Drawing	LDE & CHU	Art Room 1
F45 Fitness	CBY & MJO	Offsite—meet outside PP 13:50
Fencing	PZA & JVA	Change in PE at 1:50 then to PPH
Final Cut Pro	SSA & SBI	G31
Glee Club	CBO & AJU	Room 1
Horse Riding	JWO & KOL	Offsite—meet in Dining Room
London Zoo	ECO & FKH	Offsite—meet in Library 13:20
Netball	HHA	Offsite—meet in PE corridor 13:50
Polymer Clay	CFL & FSY	Room 35
Robotics	MMC & RLE	Room 33
Senior Football	SRI, JKU & LST	Offsite—meet in PE corridor 13:50
Table Tennis	RAL & PLE	Drama Studio
Table Top Gaming	DBL	Lab 1
Tall Buildings of London	TLA & DFL	Offsite—meet in Library 13:50
Velo Park	TTC, WBR & HSI	Offsite—meet outside GPS 13:00
Yoga	MTH & KPA	Room 11

Clubs for Autumn Term 2023

Day	Time	Activity	Staff	Location	Year Groups
Monday	12:50-13:15	Y11 Chemistry Revision	HSI	Science Lab 2	11
Monday	12:50-13:45	String Ensemble	R H'white	R2	All
Monday	12:50-13:45	Russian Club	PZA	B3	All
Monday	12:50-13:45	Italian Club	TLA	R23	All
Monday	12:50-13:45	Woodwind Ensemble	S Sarvamaa	R1	All
Monday	12:50-13:45	Mandarin	TLA	G34	All *
Monday	13:10-13:45	Table Tennis Club	PE	PP Hall	All
Monday	13:20-13:45	Board Games	DFL & ECO	R11	6 – 9
Monday	13:20-13:45	Business Studies Clinic	JMA	G21	10 & 11
Monday	16:00-17:00	Karate Club	PE	PP Hall	All
Monday	16:00-17:15	Football Club	PE	Regents Park	All
Monday	16:00-17:15	Netball Club	PE	Regents Park	All
Tuesday	12:50-13:50	GCSE Art Club (Hybrid only)	LDE	Art Studio 1	HS 10 & 11
Tuesday	12:50-13:15	Y11 Biology Revision	RLE	Science Lab 2	11
Tuesday	12:50-13:45	Spanish Club	CFL	G34	All
Tuesday	13:15-13:45	PPS Choir	SHI & CBO	R1	All
Tuesday	12:50-13:45	Guitar Group /Rock Band	DMC	R2	All
Tuesday	13:10-13:45	Speed Learning – GCSE Geographers	KOL	10	10 & 11
Tuesday	15:45-16:45	French Club	TLA & CFL	R36	All
Tuesday	16:00-17:00	Macbeth Rehearsals	RAL & AJU	Drama Studio	Invite only
Tuesday	16:00-17:00	Design Club	MJO & JVA	B1	All
Wednesday	08:00-08:30	Essay Building Skills	MTH	G33	10 & 11

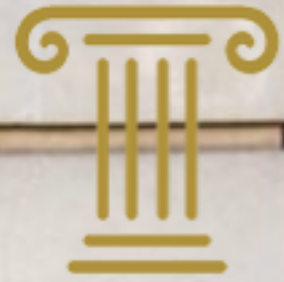
**** Art Scholarship holders must attend**

Wednesday	12:50-13:30	Y7 Haunted House Rehearsals	RAL	Drama Studio	7
Wednesday	12:50-13:45	Music Theory Club	ZBO	R42	All
Wednesday	12:50-13:50	GCSE Drama Club	AJU	Drama Studio	10 & 11
Wednesday	12:50-13:45	Percussion Ensemble	J Morrison	R2	All
Wednesday	13:10-13:45	GCSE PE Revision Club	PE	GPS tbc	10 & 11
Wednesday	16:00-17:00	Fencing Club	External Coach	PP Hall	Sign up with PE
Thursday	12:50-13:20	Y 11 English Language Intervention	JWO	G22	Y11
Thursday	12:50-13:40	Weight Training Club	PE	Changing Rooms	All
Thursday	12:50-13:40	Running Club	PE	Regents Park	All
Thursday	12:50-13:15	Y10 Science Revision (Combi & Triple)	FKH	Science Lab 2	10
Thursday	12:50-13:50	GCSE Art Club	TMO	Art Studio 1	10 & 11
Thursday	12:50-13:45	Digital Hub	SEN Dept	R33	All
Thursday	12:50-13:15	Y11 Physics Revision	WBR	Science Lab 3	11
Thursday	13:10-13:45	History Revision	PLE	G21	10 & 11
Thursday	16:00-17:00	PPS Chamber Choir	CBO	R1	All by audition
Thursday	16:00-17:00	Design Club	MJO & JVA	B1	All
Thursday	16:00-17:15	Girls Basketball Club	PE	Church St Sport Centre	All
Thursday	16:00-17:00	Art Club	TMO & LDE	Art 1 & 2	Invite only **
Friday	08:00-08:30	Geography Revision	EWE	10	11
Friday	08:30-09:00	LGBT+ Club	TLA	R23	All
Friday	12:50-13:45	Brass Ensemble	W Brown	R2	All
Friday	12:50-13:45	Japanese	TLA	G34	All*
Friday	12:50-13:30	Y10 Science Revision (Combi & Triple)	DBL	Science Lab 1	10

Portland Place School
56-58 Portland Place
London W1B 1NJ
Tel: 020 7307 8700

GPS Building:
143-149 Great Portland St
London W1W 6QN

admin@portland-place.co.uk
www.portland-place.co.uk



PORTLAND
PLACE W1
CITY OF WESTMINSTER

Thank you for reading

FOLLOW US



@PortlandPlaceSchool



@PortlandPlaceHD



Portland Place School