

The Weekly Buzz

06 March 2023

Artwork by Jessy Y11





Portland
Place
School

Noticeboard

Lunch Menu

W/c 6th March

Week 2 Lunch Menu

MONDAY

- BBQ Chicken Casserole
- Cauliflower mac & cheese (V) (Gluten,milk)
- Mashed Potato(V)
- Broccoli (V) Sweetcorn (V)
- Roasted Veg Medley (V)
- Flapjack (Gluten,Sulphites)

Tuesday

- Beef burger
- Vegan burger (V)
- Burger bun (Gluten)
- Potato wedges(V)
- Green Beans(V)
- Shredded Cabbage(V)
- Steamed Jam Sponge (egg,Gluten,sulphites)

Wednesday

- Gammon with Yorkshire Pudding (Gluten, egg, milk)
- Cheesy Lentil Loaf(V) (egg, milk, may contain Gluten)
- Roasted veg medley(V)
- Roast Potatoes (V)
- Roasted carrots (V)
- Gravy
- Rice Cakes

THURSDAY

- Beef, Lentil & Sweet Potato curry
- Spinach & Lentil (V)
- Brown Rice (V) Sweetcorn (V)
- Baked Cauliflower(V)
- Courgette(V)
- Banoffee Pie (Gluten,milk)

FRIDAY

- Ham Pizza (Gluten,milk)
- Veg Pizza (V)Gluten, milk)
- Oven baked potato wedges (V)
- Crushed peas (V)
- Baked beans (V)
- Chocolate chip cake (Gluten,egg,soya)

The FUTURE of FOOD

ON THE MENU EVERYDAY

- ☆ Soup of the Day
- ☆ Salad Bar
- ☆ Fresh Fruit
- ☆ Yoghurt

Allergen Key: 1. Milk, 2. Fish, 3. Gluten, 4. Peanuts, 5. Tree nuts, 6. Soya, 7. Sesame, 8. Lupin, 9. Shellfish, 10. Molluscs, 11. Egg, 12. Sulphite, 13. Celery, 14. Mustard

MENU IS SUBJECT TO CHANGE SHOULD INGREDIENTS BE UNAVAILABLE

Gluten-free options available each day



Portland
Place
School

Noticeboard

DATE FOR THE DIARY

House Swimming Gala - Fri 10
Mar, Queen Mother Sports Centre

'Grease' - Wed 22 & Thur 23 Mar
JW3

GCSE Music Performance Exams
Tues 28 & Wed 29 March

GCSE Drama Performance Evening
Thur 30 Mar (TBC), Drama Studio

Year 6-8 Creative Arts Showcase
Thur 25 May, RADA Studios

Summer Concert - Thur 22 June
RADA Studios

Sports Day- Fri 23 June
Perivale

Celebration Day - Thur 29 June
Regent Hall & GPS

More details to
follow



Portland
Place
School

Noticeboard



LAMDA EXAMS

MONDAY 6TH MARCH 2023

9.00am - 4.00pm

Room 11



Portland
Place
School

Noticeboard

PARENTS EVENINGS IN MARCH

Year 6 - Monday 6th
Year 7 - Monday 13th
Year 8 - Monday 20th

ALL ARE ONLINE
DETAILS TO FOLLOW



Portland
Place
School

Noticeboard



Portland
Place
School

Drama + Music Department Presents,

GREASE



Running Exclusively from, 22nd - 23rd March.
See You At 19:00
Venue: JW3



Portland
Place
School

Noticeboard

See next week's issue!

PORTLAND PLACE SCHOOL PRESENTS

YEAR 11 MEDIA OSCARS NIGHT

Thursday 2nd March
4.30pm
PPS Hall
Refreshments Provided





Portland
Place
School

Noticeboard

Parents Network Theatre Club

**Discounted tickets £40pp
for students, family & friends**

**Deadline to purchase tickets 8th March.
To purchase a ticket or for further info
please email joanna.fb@me.com**

The Wizard of **OZ**

**The London Palladium
Thurs 29th June
7.00pm start**



Portland
Place
School

Noticeboard



PARENT/TEACHER QUIZ NIGHT

THURS 27 APRIL 2023

7.00PM START / 9.00PM FINISH / PPS HALL

Tickets £10 per person. Includes a sharing cheese board for each table of 6. No drinks for sale but glasses provided so BYO wine/soft drinks etc

For tickets/questions, please contact: Y6/7 Alexis Welch (alexis@binkyshop.co.uk), Y8 Silvie Leclair (silvieleclair@hotmail.com) or Madiha Haq (madiha.haq@btinternet.com), Y9 Amanda Gallagher (mandagallag@yahoo.co.uk), Y10/11 Jo Francis-Baum (joannafb@me.com)

**Help the parents reclaim their throne
from the teachers!**





Portland
Place
School



Noticeboard

PPS Parents Network



COFFEE Morning

Thurs 4th May
8.30am-10.00am

**Dining Room,
Great Portland Street Building**



All parents & carers welcome



Portland
Place
School

News

Year 11 Theatre Trip

On Tuesday afternoon, the whole of **Year 11** headed to the Fortune Theatre to see ***The Woman in Black*** which is closing this week after 33 years on the West End. The play is a master-class in building tension and suspense, all with a very simple set and just three actors. Despite insisting they weren't frightened at all, more than a few screams escaped Year 11!

The English Department



THE WOMAN IN BLACK



BRITISH
SCIENCE
WEEK
2023

13-17 March 2023

INTRODUCING
THE THEME

CONNECTIONS

As we celebrate togetherness, after a period where isolation was a sad but necessary reality, 'Connections' is an apt theme for **British Science Week 2023**. Nearly all innovations in science, technology, engineering and maths are built on connections between people; two (or more) heads are better than one, after all!

What's on?

Lunch time activities open to everyone **13.15-13.45**.

Monday 13 March	Tuesday 14 March	Wednesday 15 March	Thursday 16 March	Friday 17 March
Dissections (15 places available) Lab 1	Making Slime (15 places available) Lab 2	Circuits Challenge (15 places available) Lab 3	Neurodiversity X Science Week Challenge (Open to all) PPS Hall	Making Slime (15 places available) Lab 2

How can I get involved?

Email Miss Silcocks to sign up (harriet.silcocks@portland-place.co.uk).

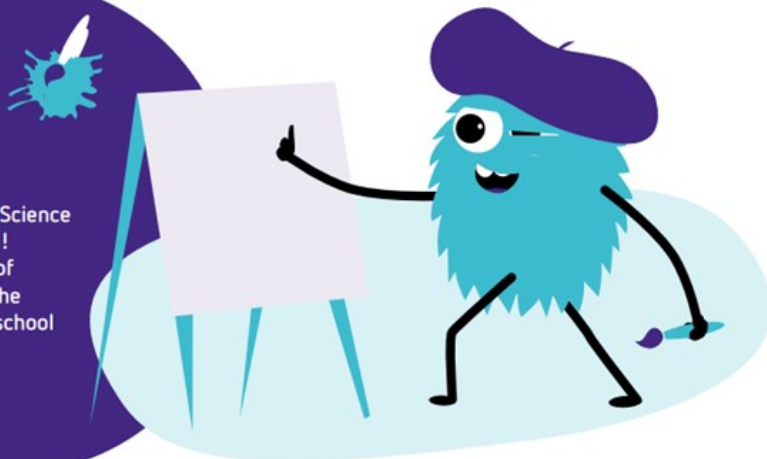
There are only a limited number of places per activity.





POSTER COMPETITION

Students can get creative and enter British Science Week's annual, UK-wide poster competition! They can make a poster about any version of 'Connections' that they like and be in with the chance of winning an array of prizes. Each school can enter the 5 best posters!



Kit list

Paper (A4 or A3)

Creative materials, such as:

pens
pencils
scissors
glue
watercolours
paints
crayons
felt
thread
wool
foil
clay
string
beads
stamps
foam
pompoms

Instructions

Encourage students to think about different areas of 'Connections' so they can come up with ideas to include in their poster. Here are some points and questions to get you going:

- Get students to think about their personal experience of connections – from studying the connection between eco-friendly choices and a cleaner planet, to connecting with a classmate to learn how working with others can help people overcome challenges that they thought they could not do! How has it helped them to become stronger, braver, kinder or more accomplished?
- How do students think connections impact the world? You could help them to consider the family tree that connects all living creatures, how their body parts are connected, or even how internet connection is changing how we communicate. What are examples of good connections?
- Can students think of people they have connected with who have helped or inspired them? Perhaps they could create a portrait of them to show this?

From the learning of new skills to the development of places and ideas that enable us to do things more efficiently in our everyday lives, connections are everywhere!

Making the poster

Once they've done the thinking, it's time for students to get creative! Posters must be A4 or A3 in size and you'll need to be able to take a photograph of each one so it can be sent to us online for judging. Students can use pop-up pictures, pull out tabs or use materials such as pencils, paints, crayons and paper to create their posters.

Submitting the poster

Posters will be judged on creativity, how well they fit the theme and how well they have been made or drawn, and how engaging they are. Once a student's poster is complete, take a photo of it and complete the online form to submit it as an entry.

Next steps

Celebrate! For more details, along with the full set of poster competition rules and tips, check out our website: britishscienceweek.org/plan-your-activities/poster-competition ✂.



Look out for the activities in this pack marked with a paintbrush symbol, they can be a source of inspiration!



Portland
Place
School

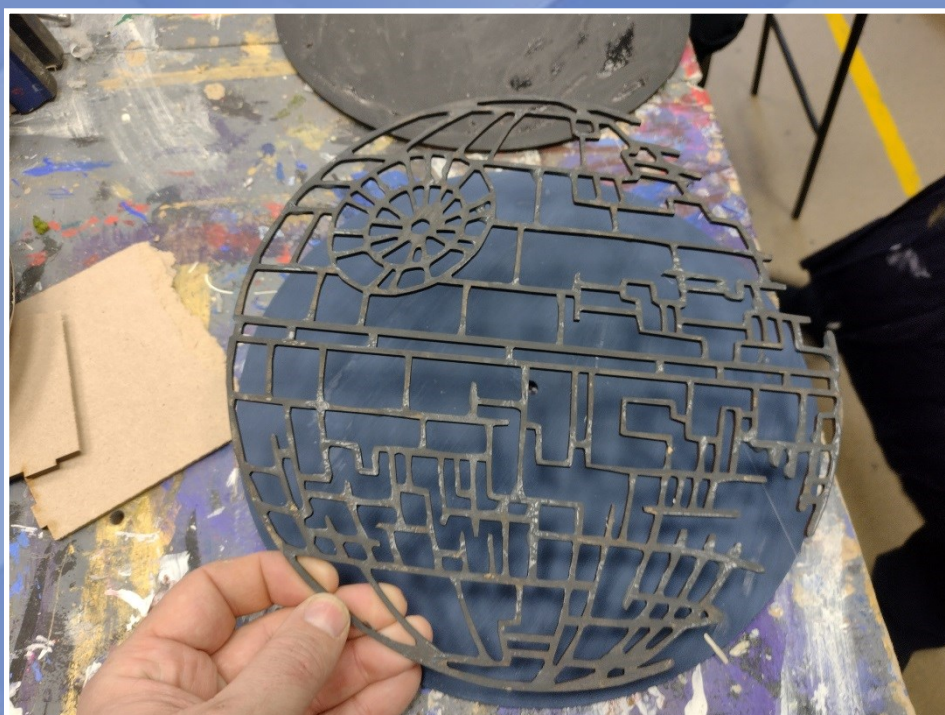
News

Design

Well done to **Joel Year 9** who has designed and made a phone stand with a strong degree of accuracy.

Also well done to **Kit Year 9** who is designing and making a Star Wars death star inspired sculpture.

Mr Wood





Portland
Place
School

News





★ **блины** ★

The Russian Club students celebrated Pancake Day last week. They also researched the topic of блины - see the next page. ★





Russian Pancakes

блины

Facts about “Blini”

- Blini are Eastern Europe’s famous pancakes originated in Russia.
- They can be eaten with all kinds of toppings such as: Berries, Nutella, cream, jam and many more!
- They are much easier to make than normal British pancakes.



- Blini were considered by early East Slavic people in pre-Christian times to be a symbol of the sun, due to their round form colour.



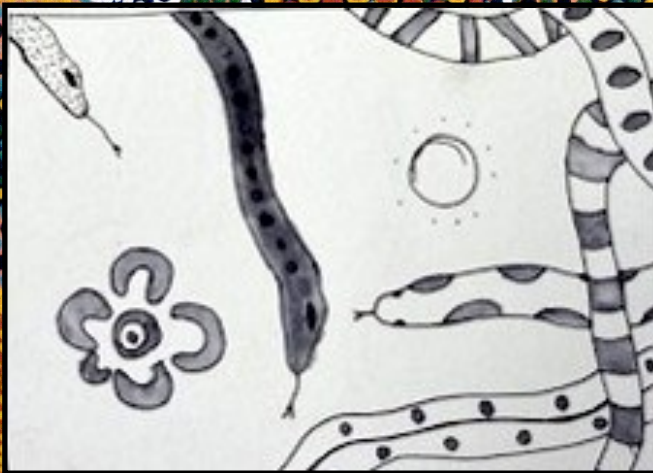
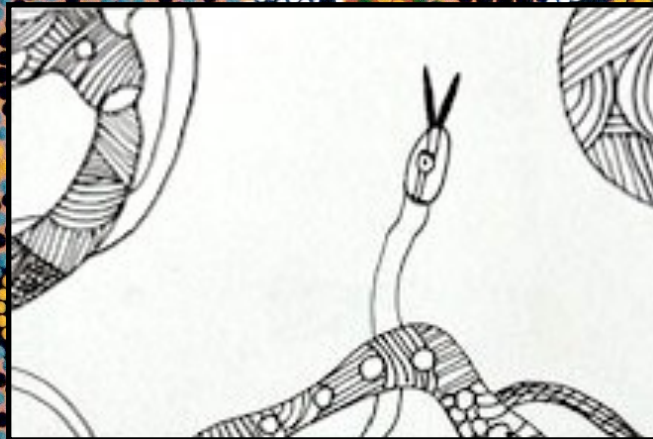
History of Blini



Portland
Place
School

News

Art



Mia Y10 Hybrid

THE WALL OF KINDNESS

Thank you to Ms Keen who gave me an extended deadline on a piece of work because I was sick - Amelia Z, Y8 Hybrid

I'd like to nominate Inigo for being friendly to me this week. Alex, Hybrid Y10

Thanks to Mrs Flack who was very supportive to me in Spanish - Eddie, Y8 Hybrid

Thank you, Haofeng, for helping me understand new words in lessons. Your wonderful support means a lot to me. Nancy, Year 8

Thank you to Mrs Wolf Murray for taking us to the theatre to see 'The Woman in Black' - Y11 Hybrids



Portland
Place
School

News

Year 7 Shakespeare Projects



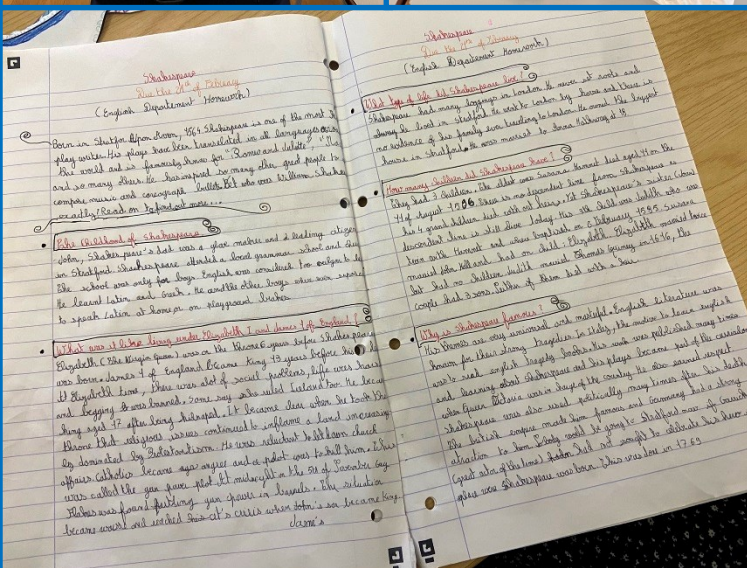
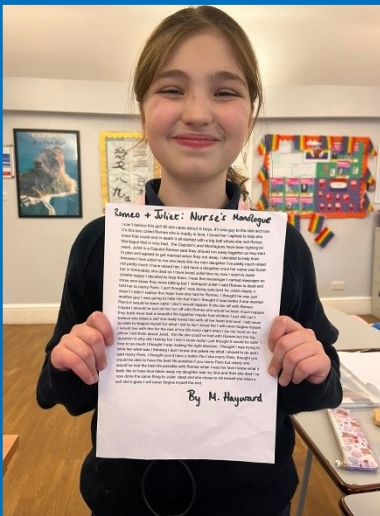
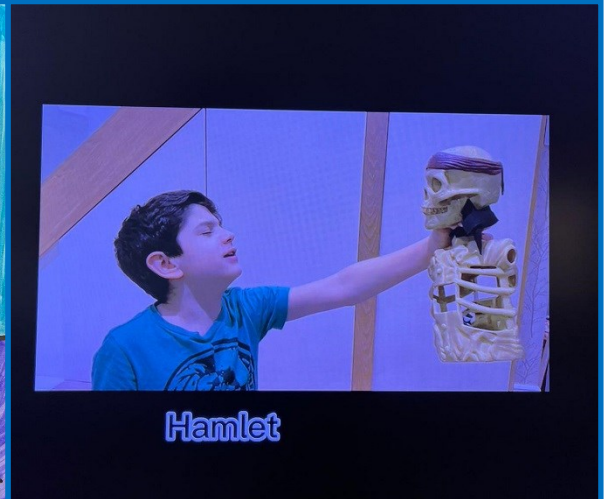
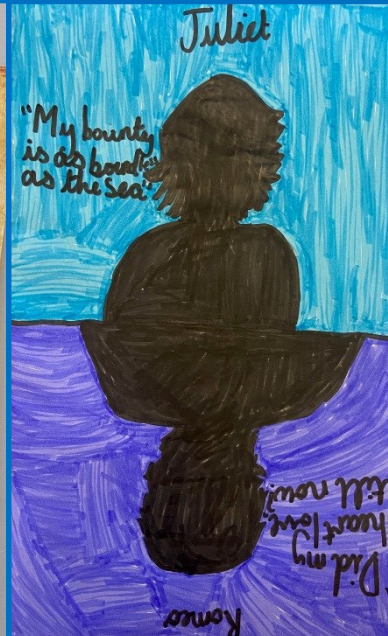
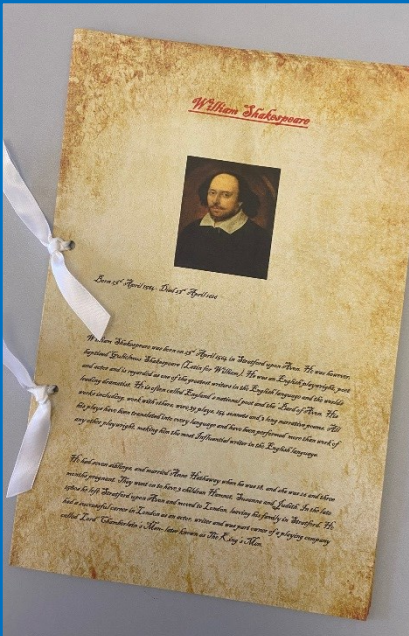
The English Department is bursting with pride after Year 7 brought their incredible Shakespeare projects in! We've seen extraordinarily detailed information folios, traditional Elizabethan biscuits, invitations to the Capulet Ball, costume designs, cakes, masks, Minecraft models, rewrites of scenes, drawings, dioramas, Elizabethan menus and even a short film version of Hamlet! The ingenuity and creativity of our students never ceases to amaze us - they have taken this project and run with it to the most wonderful standard.

Congratulations to all the pupils in Year 7!



Portland
Place
School

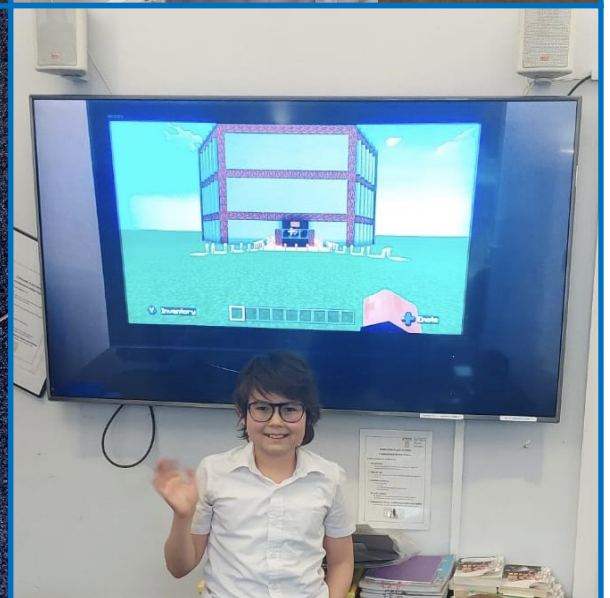
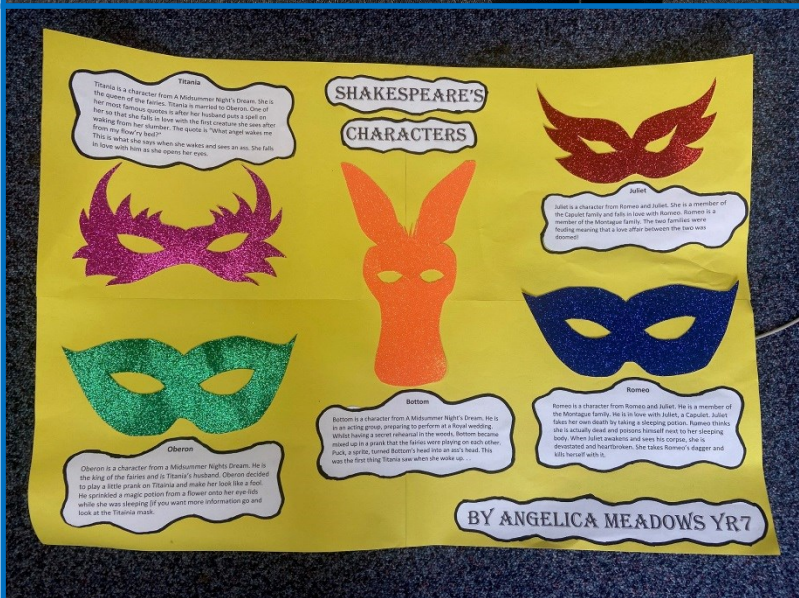
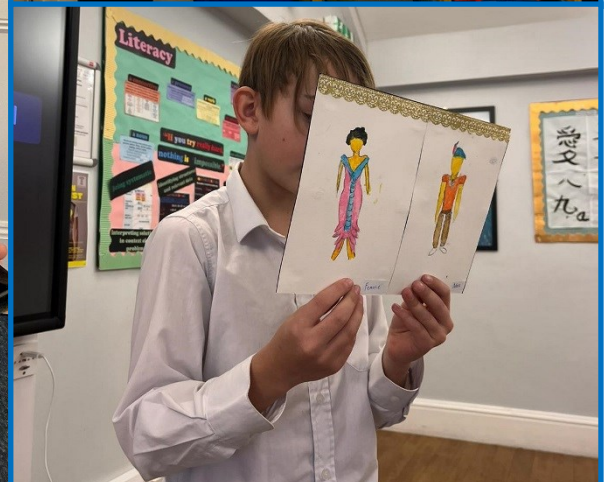
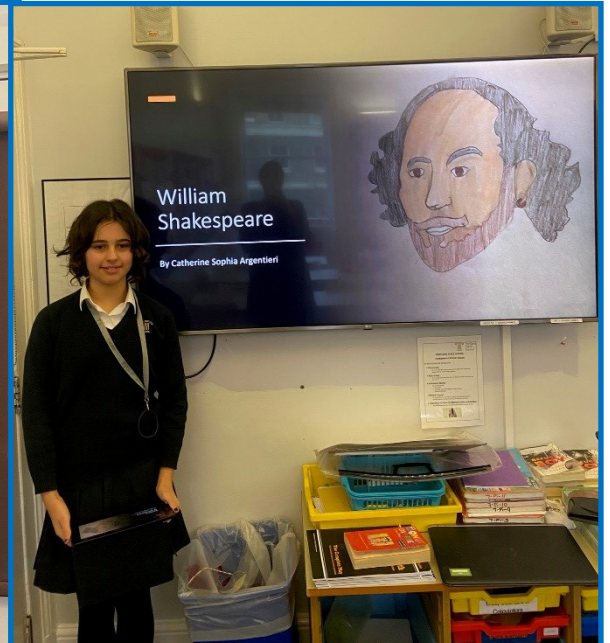
News





Portland
Place
School

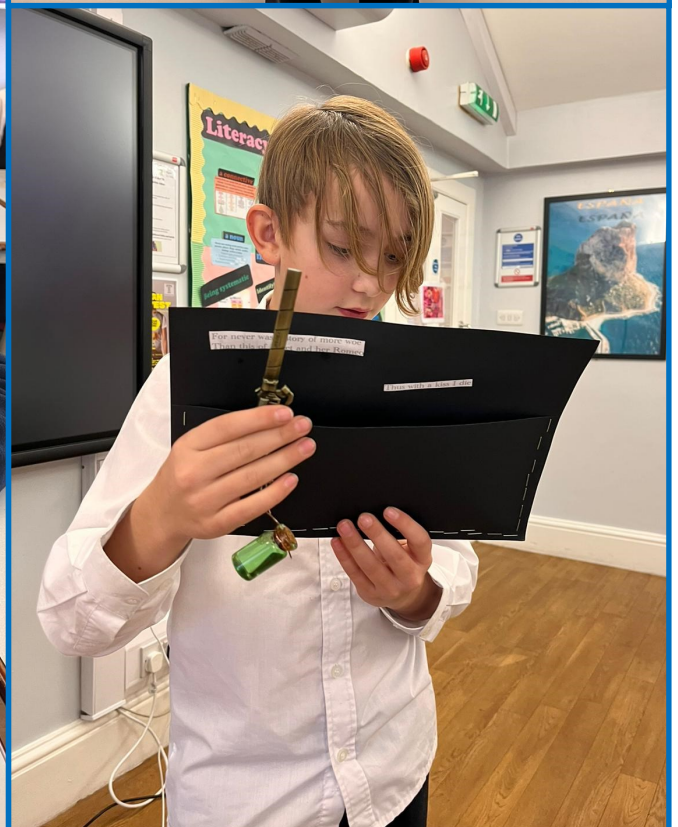
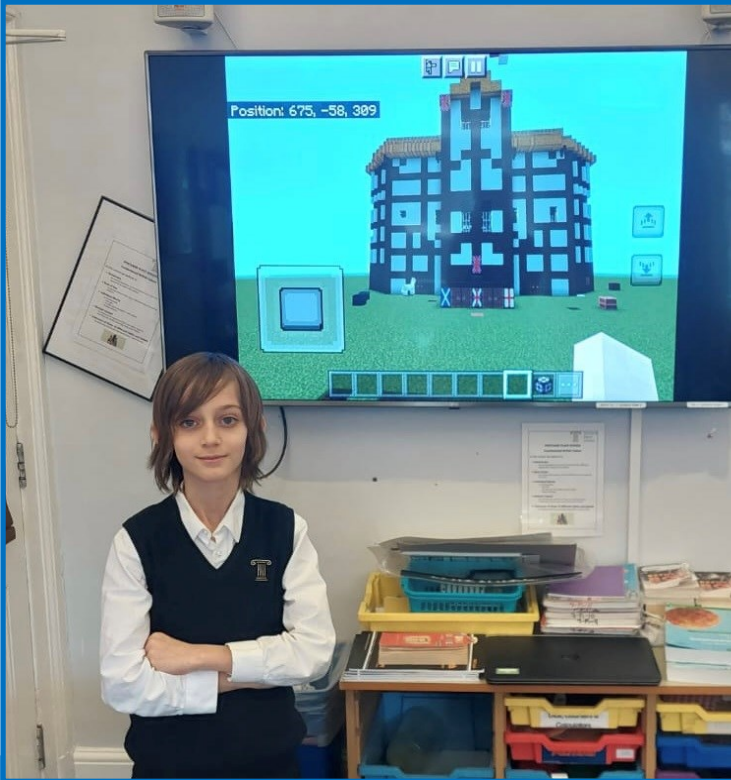
News





Portland
Place
School

News





Portland
Place
School

News

ENGLISH AS AN ADDITIONAL LANGUAGE

Reading with the Heart

On World Book Day 2023, I asked my lovely Year 8 students what they thought about reading and how it made them feel. The unanimous opinion was that we should read with the heart. Please see below their answers:

Mia - "I love reading books that are based on real life stories. I feel they help me develop my knowledge about the world and life in general."

Taishi - "If the story speaks to me, I really enjoy it. I like reading the blurb to find out what the book is about- for me, that's the main criteria for choosing a book."

Abdulelah - "Reading makes you more creative and it improves your memory."

Haofeng - "Reading helps your brain develop. I get excited when the book is interesting, and I feel I am part of the story. Roald Dahl's books, in particular, take you to another world... At the moment, I am reading "Danny, The Champion of the World" and I highly recommend it. It is absolutely fantastic! Also, I have read many books by Charles Dickens, and I really enjoyed "David Copperfield".

Nancy - "I feel really happy when I read, and I sometimes identify myself with one of the characters in the story."

Well done, everyone! Ms Florea

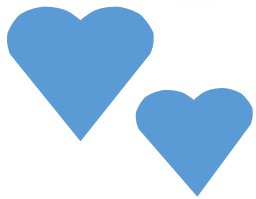




Portland
Place
School

News

Benefits of **READING**



Reading sharpens **MIND**

Reading exercises **BRAIN**

Reading keeps you **ENGAGED**

Reading strengthens **MEMORY**

Reading introduces **EMPATHY**

Reading expands **VOCABULARY**

Reading increases **KNOWLEDGE**

Reading enhances **IMAGINATION**

Reading fosters **CONCENTRATION**

Reading improves **WRITING SKILLS**

ISA London North Cross-Country Championships

On Tuesday, Portland's best cross-country runners bused over to Abbott's Hill School in Hemel Hempstead to contest the ISA London North regional championships. The conditions, although cold, were good, with firm ground, but the school site was on the side of a hill and there was barely a flat spot on the circuit and some very steep hills for our runners to contend with.

Y10's **Sonny** and **Ethan** were Portland's most successful runners on the day, both of whom have qualified for the ISA National Cross-Country Championships at Worksop College this weekend. The London North competition served as a regional qualifier for the national meeting, with any pupil finishing in the top 10 being given selection. The rest of Portland's squad performed very well and recorded some good runs. Portland's Year 7 Boys achieved the best team result, managing 5th overall, with 15 schools entered. The boys included: **Roman**, **Dominic**, **Tom** and **Ted**. There were roughly 60 runners in each race.





Portland
Place
School

Sports report

Here are the finishing positions of all our runners:

Year 7 Girls: Helena 19th, Beatrice 37th, Lucy 50th, Lily 51st

Year 7 Boys: Roman 25th, Dominic 34th, Tom 35th, Ted 41st

Year 8/9 Girls: Maya 21st

Year 8/9 Boys: Humphrey 24th, Spike 25th, Hazuki 32nd, Dexter 33rd

Y10/11 Boys: Sonny 6th, Ethan 8th, Mason DNF





Portland
Place
School

Sports report





Sports report



That will do Eddie nicely!!

The new half term started with a bang as Portland Place's U14's, led by **Max C** took a massive victory from Kew House at Regent's Park.

The weather was on the side of the home team as the sun parted the clouds and the free-flowing Portland Place team could utilise their offloading skills as they took the game to Kew House straight from the kick off.

After winning the Rock, Paper, Scissor competition Max C decided that PPS were more than capable of attacking in the first phase. Breaking the line, the iconic "**Max Coombe Illustrious Dummy**" was thrown within the first 20 seconds, with seemingly the whole Kew House team falling for it. Max C was unlucky to put his foot into touch, but the start was dominated by PPS who battled for each metre gained.

It was all go-forward ball with **Rafer** playing scrum half, creating quick ball at every opportunity, gaining the ball from the rucks and allowing the forwards to push the Kew House defence backwards. Strong runs from **Reggie, Max** and powerhouse **Eddie** saw PPS's pacey backline running onto the ball and gaining even more ground. **Humphrey** and **Olly** in the centre brought pace and power, both of whom were breaking the line with ease. A fantastic switch move saw Olly break the defence before offloading to Max D who happily received the ball and dived over the line. The first half saw Kew House enter the Portland Place half only twice, but the PPS squad camped outside the opposition 22m line. The scrum was a big force with the PPS team moving forward at every opportunity. This allowed Max C to utilise players such as Jake, Tec and Hazuki, out on the wings as they opened-up the defence at every opportunity.



Sports report

But it was Captain Max who managed to get over for the second try as a great scrum allowed Max to run onto the ball and dance his way over the line. With the half time whistle being blown Portland Place were unlucky not to be further ahead but it was not long after the break that they extended their lead. Putting pressure on the kick off, Portland were able to re-gain the ball back as some quick thinking from Humphrey saw him intercept a stray pass from Kew, sprint down the pitch and offload it to Max D who was able to dive over the line.

There was no loss in spark or let up in play from the team as they continued to pile on the pressure and it was instantly seen as **Kit** salvaged the bobbling ball to pass it to **Yaqoub**, who offloaded it to Max C who happily ran it in under the posts.

It was an electric start to the second half: balls being thrown, kicks being put through and more players using the MCID (**Max Coombe Illustrious Dummy**) including **Spike**, who threw this dummy towards his brother **Dexter** before popping the ball to him to see him break the line. After having some pressure applied to their defence it was their dominant scrum that saw PPS steal possession and with a flash the ball was over the Kew House try line and we had managed to gain another try.

The team came together again as their offloading game brought more danger for their opposition who could barely hold on as Eddie carried on breaking through the defence. Mr Kubik who continued to shout encouragement throughout the game, made some clinical replacements. With the finishers coming on Rory managed to cause havoc in the midfield as he stole the ball from Kew House and move it onto Arad who, although mishandled, managed to get the ball out of his hands and allow Koby to charge forward. A powerful run from Yaqoub saw a high tackle bring a quick tapped penalty and Max D was happy to slip through and dive over.

It was a fantastic performance and as Mr Kubik quoted, one of the best games that he has seen in the PPS uniform.

Back of the Game was Olly and the Forward of the Game was Eddie. Although they were given these accolades, the whole team deserve a mention, from the starting 15 to the 21st player it was an incredible 40-20 win.



Portland
Place
School

Sports report



U15 Rugby vs Kew House

Kew 35 v 10 PPS



On Thursday 23rd February PPS u15's boys rugby team made their way to Chiswick to take on Kew House School in a high paced, physical game of rugby.

In the early stages it was clear PPS were in for a challenging game of rugby. Kew had pace, power and were well organised. PPS had lots of defending to do in the early stages which they did very well. The boys showed good bravery and aggression but were guilty of poor positioning. Kew took advantage of this, finding space out wide and took a comfortable lead mid-way through the first half.



PPS tried to respond, **Sonny** had some strong carries and **Miles** broke the line out wide and looked like he might run in a try from his own half but was well tackled and taken into touch. PPS just could not keep possession of the ball and made lots of errors in the scrum. By half time Kew had racked up a 25-0 half time lead with PPS barely having a touch of the ball, it was a very tough half for PPS.

Sports report

In the second half it was PPS who found a bit of momentum and rhythm in attack. **Felix** and **Mason** pulled the strings well in offence, they were barking orders at their teammates and picking good passes to set up some strong carries. PPS scored their first try through **Sam** who picked and drove from the base of a ruck, crashing his way over the line from 3m out. It looked as though PPS were destined to score a second try minutes later when **Ethan** broke the line with some good footwork and threw an excellent wide pass to **Ethan** on the left wing who was 3m from the try line, but Kew made an outstanding try saving tackle, turned the ball over and ran the length of the pitch to deliver a sickening blow to PPS. However, PPS didn't let their heads drop and responded with another close range try from the base of the ruck through **Felix**. The boys tried to push for another but unfortunately, made some bad mistakes with ball in hand which Kew punished. At full time the score was 35-10 to Kew House.

This was a tough game for our u15 boys against a well drilled Kew House side. The boys were dominated in the first half but turned it around in the second half and played some excellent rugby at times – the second half score alone was 10-10, 2 tries each. **Felix** had a good game at scrum half with his high work rate and commitment. **Sonny** carried hard all game and made several line breaks in attack. **Ethan** showed great vision, footwork and creativity but player of the match goes to **Nils** who had his best game in a PPS shirt to date. He put in some smashing tackles, did some great work at the breakdown and scared the Kew defensive line with his aggressive, physical ball carrying. Unlucky, boys.



U13 – Girls Football Vs North Bridge House Hampstead



Squad: Maya, Jazz, Zaya, Kansas, Esther, Lucy, Helena and Lily

On Thursday 23rd of February the year 7 and 8 girls played a football fixture against North Bridge House Senior School at Regents Park. It was a cold and windy afternoon, but this did not deter the girls. They got off to a good solid start and worked well as a team to push the ball up the pitch. Unfortunately, NBHS got the better of us quite quickly and scored their first goal. They were very sharp on the ball and it took a while for PPS to break them down and get a goal back to keep them in the game. With **Maya** and **Helena** up front and **Lily** and **Zaya** playing in midfield we were building momentum. In defence we had **Lucy**, **Kansas**, **Esther** and **Jazz** in goal who made some incredible saves. At half time we were 3 – 1 down but that made PPS even more determined to keep giving it their all. PPS made it hard for NBHS to score goals in the back of the net in the second half and we had some great defensive play from **Esther**, **Kansas** and **Lucy** who were working hard to keep clearing the ball from our end. Unfortunately, NBHS got another 3 past us and the game ended in a 6 – 1 defeat. Congratulations to **Lily** on achieving the player of the match. A huge well done to all those involved!!

Portland Place House Swimming Gala

Friday 10 March
12pm-3pm

Years 6-11 boys and girls—if you want to swim for your house, sign-up with your House Captain.

Events: 50m freestyle, Backstroke and Breaststroke, 25m Butterfly, Freestyle and Medley Relays.

NEXT WEEK'S CLUBS & FIXTURES

- Mon 6th Mar: Y7&8 girls' netball vs St James, away, 2.45pm
Y8 boys' rugby vs North Bridge House Hampstead, Regent's Park, 2.00pm
Y11 GCSE PE swimming assessment, Kentish Town, 9.00am
Table tennis club, PPS Hall, 1.10-1.45pm
Karate Club, PPS Hall, 4.00-5.00pm
Football club, Regent's Park (transport provided), 3.50 – 5.15pm
- Tues 7th Mar: Y6&7 boys' rugby vs North Bridge House Senior, regent's Park, 2.00pm
GCSE PE, practice netball assessment, Church Street, 11.00am – 1.00pm
GCSE PE, practice athletics assessment, Linford Christie Athletics Track, 11.00am – 1.00pm
- Wed 8th Mar: Running club, Regent's Park, 12.50 – 1.20pm
GCSE PE Revision Club. Rm G31, 1.10 – 1.45pm
Fencing club, PPS Hall, 4.00-5.00pm
- Thurs 9th Mar: Y8 boys' basketball vs North Bridge House Hampstead, away, 2.00pm
Y9 girls' netball vs Thames Christian College, Battersea Sport Centre, 2.15
Weight training club, PPS changing rooms, 12.50-1.30pm
Dance club, Rm 11, 12.50-1.30pm
Basketball club, Church Street Leisure Centre, 4.00-5.15pm
GCSE PE practice basketball assessment, Church Street, 4.00-5.15pm
- Fri 10th Mar: House Swimming Gala, Queen Mother Sports Centre, 1.00-3.00pm

Enrichment—Second Half of Spring Term 2023

Activity	Staff	Room
Advanced Maths	TTO	G21
Basketball (Senior)	JKU	Offsite. Meet PE changing rooms at 1.50pm
Boxing	JKU	Offsite. Meet PE changing rooms at 1.50pm
Climbing	WBR & LVW	Offsite. Meet in Room 1 at 1.30pm
Cooking Club	KPA & RLE	Dining Hall & Kitchen
Cricket Nets at Lords	LST & AIS	Offsite. Meet PE changing rooms at 1.50pm
F45 Fitness	CBY & TLA	Offsite. Meet in PE changing rooms at 1.50pm
Fencing	JVA & FSY	PP Hall
Filming Techniques	BSO	G31
Horrible Histories	PLE & JWO	Room 22
London Zoo	ECO & CMH	Offsite. Meet in Library at 1.30pm
Prop Making	DWO, LDE & CHU	B1
Production—'Grease'	RAL, SHI, AJU & CBO	Drama Studio & Room 1
Spring Crafts	CFL & CBI	Room 36
Velo Park	TTC & HSI	Offsite. Meet outside PP at 1pm
Y11 Independent Study 1	DBL	LAB 1
Y11 Independent Study 2	MTH	LAB 2
Y11 Independent Study 3	KOL	G22

Clubs for Spring Term 2023

Day	Time	Activity	Staff	Location	Year Groups
Mon	12:50-13:50	Table Tennis Club	JKU	PP Hall	All
Mon	12:50-13:30	KS4 Design Drop-In Clinic	DWO	B1	10 & 11
Mon	12:50-13:45	String Ensemble	R H'white	R1	All
Mon	13:15-13:45	Chemistry Revision Club	HSI	Lab 3	10 & 11
Mon	13:15-13:45	Year 9 Science Clinic	RLE	Lab 2	9
Mon	12:50-13:45	Chinese Club	TLA	G33	All
Mon	12:50-13:45	Rock Band	DMC	R2	All
Mon	13:15-13:45	UKMT Maths Challenge	AIS	34	All
Mon	13:15-13:40	Board Games	DFL & ECO	R11	6-9
Mon	15:45-17:00	KS4 Design Drop-In Clinic	DWO	B1	10 & 11
Tues	12:50-13:30	KS3 Design Club	DWO	B1	8 & 9
Tues	13:15-13:45	Year 9 Science Clinic	RLE	Lab 2	9
Tues	12:50-13:45	PPS Choir	SHI & CBO	R1	All
Tues	13:15-13:45	Physics Revision Club	WBR	Lab 3	10 & 11
Tues	13:15-13:45	English Language Surgery	JHU	R43	11
Tues	15:50-17:15	Football Club	tbc	Regents Park	All
Tues	16:00-17:00	KS4 GCSE Art Club	LDE	Art Studio 1	10 & 11
Tues	15:45-17:00	KS4 Design Drop-In Clinic	DWO	B1	10 & 11
Wed	12:50-13:30	KS4 Design Drop-In Clinic	DWO	B1	10 & 11
Wed	12:50-13:45	Music Theory Club	ZBO	R42	All
Wed	12:50-13:50	Russian Club	PZA	R24	All
Wed	12:50-13:45	Percussion Ensemble	J Morrison	R2	All
Wed	12:50-13:50	Running Club	LST	Regents Park	All
Wed	15:45-17:00	KS4 Design Drop-In Clinic	DWO	B1	10 & 11
Wed	16:00-17:00	Fencing Club	Fencing coach	PP Hall	All
Thurs	12:50-13:45	Woodwind Ensemble	J Slack	R1	All
Thurs	12:50-13:30	KS3 Drama Club	TNO	Drama Studio	6-9
Thurs	12:50-13:50	Dance Club	CBY	R11	All
Thurs	12:50-13:50	Beginner French / Spanish	FSY	G33	6 – 9
Thurs	12:50-13:30	Weight Training Club	SRI	Boys C/ Rooms	All

** by invitation only for KS3, Art Scholarship holders must attend

Clubs for Spring Term 2023

Day	Time	Activity	Staff	Location	Year Groups
Thurs	13:15-13:45	Biology Revision Club	RLE	Science Lab 2	10 & 11
Thurs	13:15-13:45	Coding Club	MMC	33	6-8
Thurs	13:15-13:45	Spanish GCSE Club	CFL	G33	10 & 11
Thurs	16:00-17:00	PPS Chamber Choir	CBO	R1	All by audition
Thurs	16:00-17:00	Art Club	TMO & LDE	Art 1 & 2	All **
Thurs	16:00-17:15	Basketball Club	SRI	Leisure Centre	All until 26/1
Fri	12:50-13:45	Brass Ensemble	W Brown	R2	All
Fri	12:50-13:50	Japanese	Yekta	R24	7 – 9
Fri	12:50-13:30	KS4 Design Drop-In Clinic	DWO	B1	10 & 11
Fri	13:15-13:45	Science Exam Skills	DBL	Science Lab 1	10 & 11
Fri	13:15-13:45	KS4 Maths Club	KPA	Science Lab 1	10 & 11
Fri	13:15-13:45	KS3 Maths Club	AZE	33	6 – 9
Fri	13:15-13:45	French Bilingual Club	TLA	B3	7 – 9
Fri	15:45-17:00	KS4 Design Drop-In Clinic	DWO	B1	10 & 11

** by invitation only for KS3, Art Scholarship holders must attend

Term Dates

Academic Year 2022/2023

Autumn Term 2022

Staff Inset (closed to students)	Wednesday 31 August – Thursday 1 September 2022
Induction (new students)	Friday 2 September 2022
Term Starts	Monday 5 September 2022
Half term	Monday 17 October – Friday 28 October 2022
End of term	Friday 16 December 2022
Christmas holiday	Monday 19 December 2022 – Friday 6 January 2023

Spring Term 2023

Staff Inset (closed to students)	Monday 9 January 2023
Term Starts	Tuesday 10 January 2023
Half term	Monday 13 February – Friday 17 February 2023
End of Term	Friday 31 March 2023
Easter holiday	Monday 3 April – Friday 21 April 2023

Summer Term 2023

Staff Inset (closed to students)	Tuesday 24 April 2023
Term Starts	Tuesday 25 April 2023
Bank Holiday	Monday 1 May (school closed)
Half term Holiday	Monday 29 May – Friday 2 June 2023
End of Term	Friday 7 July 2023



56-58 Portland Place
London W1B 1NJ
Tel: 020 7307 8700
(Main Switchboard)

GPS Building:

143-149 Great Portland St
London W1W 6QN

admin@portland-place.co.uk
www.portland-place.co.uk



Portland
Place
School



Thank you for reading

FOLLOW US



@PortlandPlaceSchool



@PortlandPlaceHD



Portland Place School