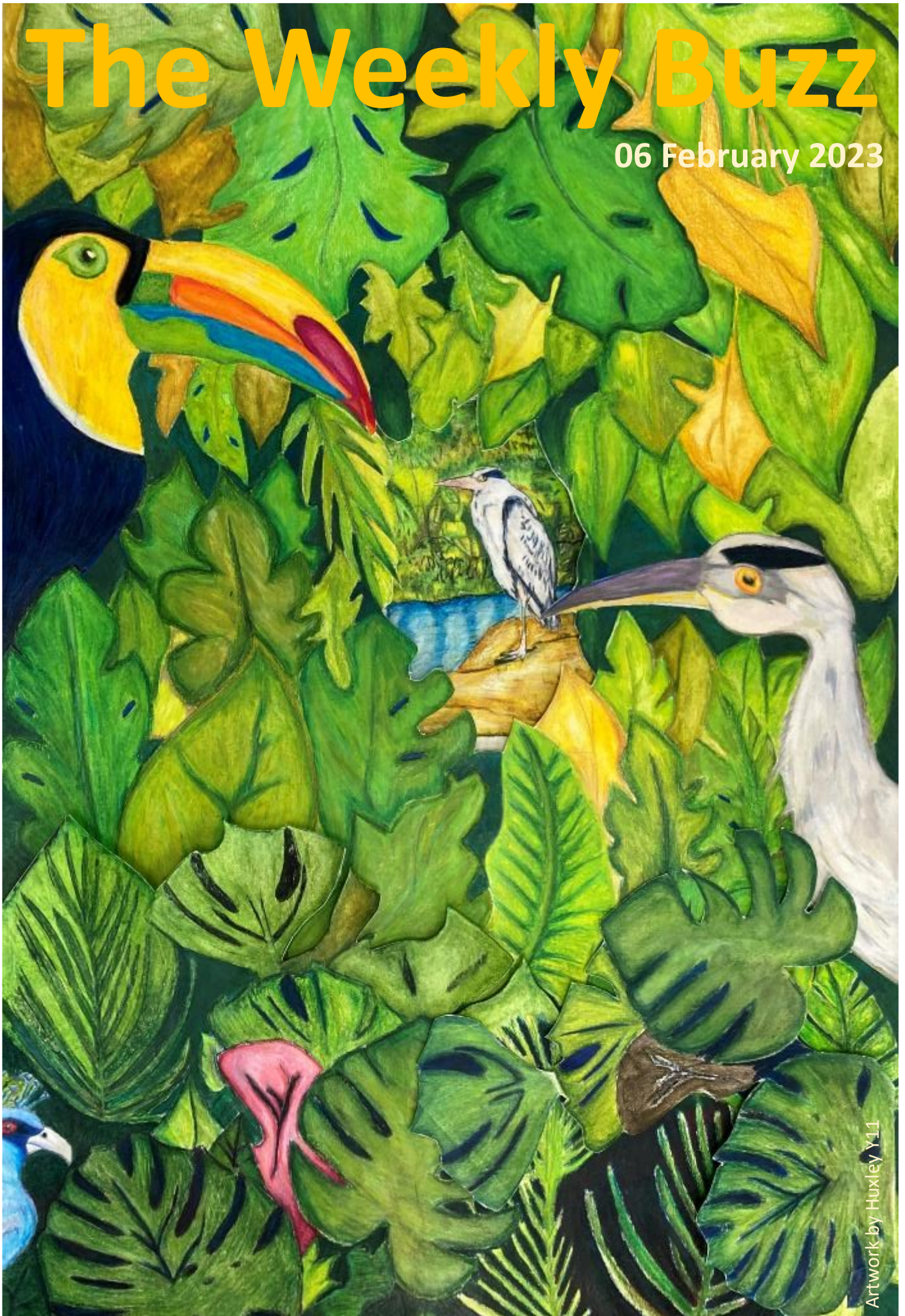


The Weekly Buzz

06 February 2023





Portland
Place
School

Noticeboard

Lunch Menu

W/c 6th February

Week 2 Lunch Menu

MONDAY

- BBQ Chicken Casserole
- Cauliflower mac & cheese (V) (Gluten, milk)
- Mashed Potato (V)
- Broccoli (V) Sweetcorn (V)
- Roasted Veg Medley (V)
- Flapjack (Gluten, Sulphites)

Tuesday

- Beef burger
- Vegan burger (V)
- Burger bun (Gluten)
- Potato wedges (V)
- Green Beans (V)
- Shredded Cabbage (V)
- Steamed Jam Sponge (egg, Gluten, sulphites)

Wednesday

- Gammon with Yorkshire Pudding (Gluten, egg, milk)
- Cheesy Lentil Loaf (V) (egg, milk, may contain Gluten)
- Roasted veg medley (V)
- Roast Potatoes (V)
- Roasted carrots (V)
- Gravy
- Rice Cakes

THURSDAY

- Beef, Lentil & Sweet Potato curry
- Spinach & Lentil (V)
- Brown Rice (V)
- Sweetcorn (V)
- Baked Cauliflower (V)
- Courgette (V)
- Banoffee Pie (Gluten, milk)

FRIDAY

- Ham Pizza (Gluten, milk)
- Veg Pizza (V) (Gluten, milk)
- Oven baked potato wedges (V)
- Crushed peas (V)
- Baked beans (V)
- Chocolate chip cake (Gluten, egg, soya)

The FUTURE of FOOD

ON THE MENU EVERYDAY

- ☆ Soup of the Day
- ☆ Salad Bar
- ☆ Fresh Fruit
- ☆ Yoghurt

Allergen Key: 1. Milk, 2. Fish, 3. Gluten, 4. Peanuts, 5. Tree nuts, 6. Soya, 7. Sesame, 8. Lupin, 9. Shellfish, 10. Molluscs, 11. Egg, 12. Sulphite, 13. Celery, 14. Mustard

MENU IS SUBJECT TO CHANGE SHOULD INGREDIENTS BE UNAVAILABLE

Gluten-free options available each day



Portland
Place
School

Noticeboard

DATES FOR DIARY

WHOLE SCHOOL ASSEMBLY - TUES 7 FEB, REGENT HALL

LOWER SCHOOL CHAMBER CONCERT - TUES 7 FEB, PP HALL

**GCSE MUSIC PERFORMANCE EXAMS - TUES 28 & WED 29
MAR**

GCSE PERFORMANCE EVENING - THUR 30 MAR, PP HALL

**HOUSE SWIMMING GALA - FRI 10 MAR, QUEEN MOTHER
SPORTS CENTRE (VICTORIA)**

'GREASE' - WED 22 & THURS 23 MAR, JW3

**YEAR 6-8 CREATIVE ARTS SHOWCASE, THURS 25 MAY, RADA
STUDIOS**

SUMMER CONCERT, THURS 22 JUNE, RADA STUDIOS

SPORTS DAY, FRI 23 JUNE, PERIVALE

CELEBRATION DAY, THURS 29 JUNE, REGENT HALL & GPS

More details to come



Portland
Place
School

Noticeboard

Valentine's Fundraiser

IN AID OF
YOUNGMINDS

Year 8 have organised a Valentine's fundraiser in aid of the YoungMinds mental health charity (www.youngminds.org.uk)



Portland
Place
School

Noticeboard

Students can place an order in the special buckets at PPS or GPS reception by donating £1.00 and writing the name of the recipient along with a message.



Heart shaped lollipops will be distributed on the last day of term by Cupid!



Portland
Place
School

Noticeboard

YEARS 7/8/9 GET YOUR

NASAL FLU VACCINE

MONDAY 6TH

**DUE TO UNFORSEEN CIRCUMSTANCES, THE NHS HAS
CANCELLED THIS SESSION. DETAILS OF NEW DATE WHEN
WE HAVE THEM. THEY APOLOGISE FOR LATE NOTICE.**



**THE NHS ARE RETURNING TO PPS. PARENTS,
SEE EMAIL FOR NHS E-CONSENT INSTRUCTIONS
(MUST BE COMPLETED IN ADVANCE)**

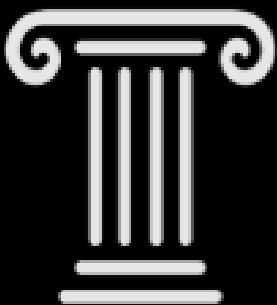


Portland
Place
School

Noticeboard

Parents, please join us at our

Whole School Assembly 2023



Tuesday 7th February

10.30am—11.30am

Regent Hall (275 Oxford St, W1C 2DJ)

No need to RSVP. See you there!



Portland
Place
School

Noticeboard

Lower School Chamber Concert

Tuesday 7th February 2023

PPS Hall, 5:00-6:30pm

Refreshments provided

PORTLAND
PLACE
SCHOOL



Portland
Place
School

Noticeboard

**CHARITY ENRICHMENT
YOU CAN CONTRIBUTE BY
BRINGING YOUR OWN
CAKE !!!**



**CAKE & STUDENT- MADE
VALENTINE'S POTTERY
SALE !!!**

WHEN?

**THURSDAY, 9 FEB,
Lunchtime**

WHERE?

In the Canteen



Portland
Place
School

Noticeboard

Les Misérables

**Tuesday
28th March
7.30pm**

Parents Network Theatre Club presents

Discounted tickets £55pp for students, family and friends for the new production of Les Mis at the Sondheim Theatre. CUT OFF DATE 12TH FEB.

To purchase a ticket or for further info please email joannafb@me.com or WhatsApp on 07989 576771



Portland
Place
School

Noticeboard

Parents Network Theatre Club presents



Ambassadors Theatre **2nd May 7.30pm**

Discounted tickets £55pp for students, family and friends. Cut off date **Thursday 9th March.**

To purchase a ticket or for further info please email joanna.fb@me.com or WhatsApp on **07989 576771**



Portland
Place
School

Noticeboard



Portland Place School

DESIGN CONTEST

Brought to you by the Maths Department

**YOUR
LOGO
HERE!!**

Maths Week is coming up
in March!!

We want you to create
the logo for the PPS
Maths Department!

PRIZES TO BE WON!

Deadline: Monday Feb 20, 2023

RULES:

1. **Designs MUST be digital**
2. **MUST have "PPS" or "Portland Place School" within the logo.**

Submission: Send to Miss McBain
megan.mcbain@portland-place.co.uk



Portland
Place
School

Noticeboard

Friendly February

This week I would like to share with you one of my favourite resources as it focuses on building positive relationships with the people around us. Ms Florea

Friendly February 2023

MONDAY



6 Get back in touch with an old friend you've not seen for a while

13 Smile at the people you see and brighten their day

20 Make a plan to connect with others and do something fun

27 Call a friend to catch up and really listen to them

TUESDAY



7 Show an active interest by asking questions when talking to others

14 Tell a loved one or friend why they are special to you

21 Really listen to what people say, without judging them

28 Give positive comments to as many people as possible today

WEDNESDAY

1 Send a message to let someone know you're thinking of them

8 Share what you're feeling with someone you really trust

15 Support a local business with a positive online review or friendly message

22 Give sincere compliments to people you talk to today

THURSDAY

2 Ask a friend how they have been feeling recently

9 Thank someone and tell them how they made a difference for you

16 Check in on someone who may be struggling and offer to help

23 Be gentle with someone who you feel inclined to criticise

FRIDAY

3 Do an act of kindness to make life easier for someone

10 Look for good in others, particularly when you feel frustrated with them

17 Appreciate the good qualities of someone in your life

24 Tell a loved one about the strengths that you see in them

SATURDAY

4 Invite a friend over for a 'tea break' (in person or virtual)

11 Send an encouraging note to someone who needs a boost

18 Respond kindly to everyone you talk to today, including yourself

25 Thank three people you feel grateful to and tell them why

SUNDAY

5 Make time to have a friendly chat with a neighbour

12 Focus on being kind rather than being right

19 Share something you find inspiring, helpful or amusing

26 Make uninterrupted time for your loved ones



ACTION FOR HAPPINESS

Happier · Kinder · Together



Portland
Place
School

Noticeboard

PARENT/TEACHER QUIZ NIGHT



THURS 27TH APRIL

Details to follow



Portland
Place
School

Noticeboard

PPS Parents Network

COFFEE Morning Thurs 4th May

**All parents/carers
coffee morning**

Save the date, details to follow



Portland
Place
School

Noticeboard

YEARS 6-9 ACTIVITIES WEEK

BARCELONA CULTURAL TOUR 3-7 July 2023

It is my great pleasure to announce that Portland Place School will be offering a cultural tour to Barcelona during the Summer Term's Activities Week. This year, pupils from Years 6 to 9 will be invited to join us on this jam-packed tour of Barcelona, which will be a great experience for the students to immerse themselves in the local culture, and also try their hand at practicing some Spanish – as well as being a deserved treat for getting through another academic year!

Places are limited to a total of 48 students, so please do return the Confirmation of Attendance early to reserve your child's spot.



Portland
Place
School

Noticeboard

TRIP SCHEDULE AND INCLUSIONS

- Return flights – Monday 3rd to Friday 7th July from a London airport
- Resort transfers
- 4 nights Bed and Breakfast accommodation
- Visits to main attractions of the city including the Gothic Quarter, Parc de la Cuitadella, Magic Fountains, Port Vell, La Sagrada Familia, Monthuic Hill and more!
- Visit to PortAventura & Ferrari Land Theme Park
- Visit to Illa Fantasia water park
- Boat cruise across port of Barcelona
- Guided tours of the Olympic Stadium
- Tablao Flamenco Show including Paella/ Tapas menu

Permission slips will need to be handed to Mr Brittain by Wednesday 8th of February.

If you have any further enquiries, please contact Mr Brittain in school or via email:

William.brittain@portland-place.co.uk



Noticeboard

Literacy Corner

Reading Strategies

You can help your child understand more about a text by:

| | |
|----------------------|--|
| Predicting | You can make informed guesses about a text by predicting: What the text is going to be about? What will happen next? |
| Skimming | You can read quickly through a text in order to get a gist of what the text is about. |
| Scanning | You can search a text for a specific word, phrase or number. |
| Close reading | When you pay close attention to the words, phrases and sentences you can build up your understanding of the meaning of a text. |
| Questioning | You can ask questions about a text to clarify your ideas. |
| Empathising | By putting yourself in someone else's shoes you can begin to empathise and feel what they feel. |
| Visualising | Building a picture in your mind can help you to gain a better understanding of the text. |
| Inferring | By reading 'between the lines' you can find meanings that are not initially obvious. |

Noticeboard

Numeracy Corner

This week we would like to share some useful tips on approaching mathematical tasks:

- Make sure you understand what the question is asking
- Check your answers make sense

Understand What a Question is Asking

- 1) Know what each command word wants you to do.
- 2) Use the number of marks as a guide to how much time you should spend on a question.
- 3) Show your working out — marks are given for it.
- 4) Answer in the correct units, or to the correct number of significant figures or decimal places.

Command Words

- Write down/state — give a brief answer
- Calculate/find/solve — show your working out
- Explain — give a written reason for your answer

EXAMPLE:

Take a look at this exam question. There are plenty of ways to avoid losing easy marks.

11 The formula for the period, T seconds, of a pendulum of length l metres is given by:

At the equator, $g = 9.78 \text{ m/s}^2$.

$$T = 2\pi\sqrt{\frac{l}{g}}$$

- (a) Find the period of a pendulum, of length 30 cm, at the Equator.
Give your answer to 3 significant figures.

The command word is 'find' so you need to show your working out.

Make sure you round your final answer to 3 significant figures.

You're given a length in centimetres, but the formula uses lengths in metres. You need to convert 30 cm into metres.

You need to answer the question in seconds.

$T = \dots\dots\dots$ seconds
[2]

Check Your Answer Makes Sense

- 1) Make sure your answer is sensible — a person can't be 22 m tall.
- 2) Check for silly mistakes — 3×3 is not 6.
- 3) If you've solved an equation, put the answer back into the equation to see if it's correct.
- 4) Expand factorised brackets to check they give you the original expression.



I always check every page I write for chicken silly mistakes...

One of the (many) great things about GCSE Maths is that most questions have definite answers, meaning you can check whether you've got the right answer. Maths gets a bad rap sometimes, but it's actually very generous.



Portland
Place
School

Noticeboard



VIEW
THE
NEW
FILM

PORTLAND
PLACE
SCHOOL



CLICK HERE

<https://vimeo.com/787506235>



Portland
Place
School

News





Portland
Place
School

News



Morocco



Moroccan Desert



Atlas Mountains



Canary Is.
(Spain)

Tar

Tarfaya

WEST
(Claimed)



Moroccan Treasures

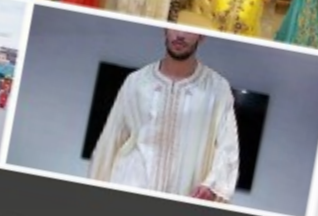
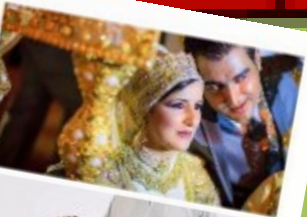
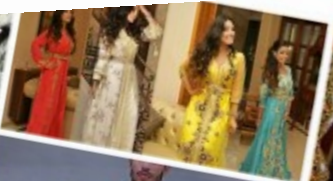


Portland
Place
School

News



Tangier – Jay's favourite city



Traditional clothing



The rugs





Portland
Place
School

News

100 Km

Marrakech

Moroccan Language

- أهلاً – Hello!
- ما اسمك – What's your name?
- اسمي هو – My name is ...
- كم عمرك – How old are you?



Moroccans football



Thank you Jay for a
wonderful presentation!!

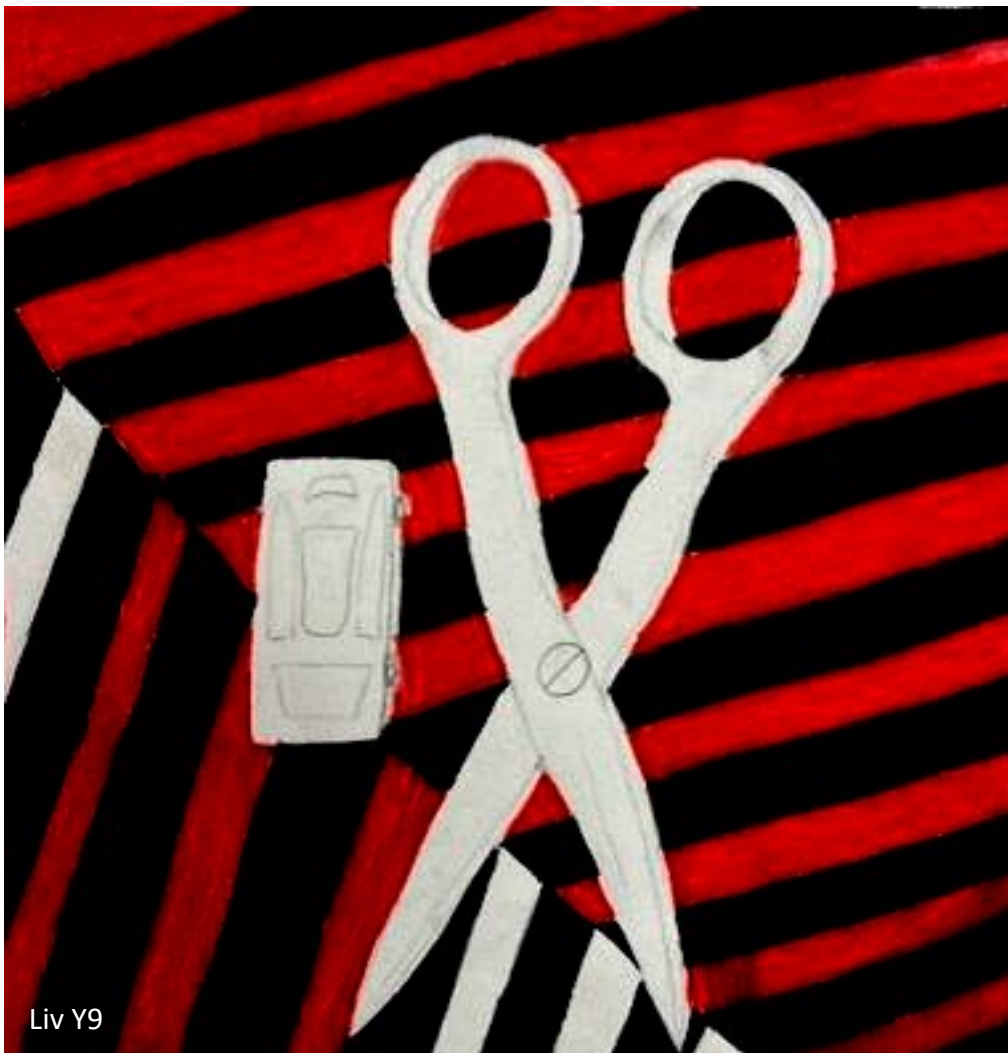




Portland
Place
School

News

Art



Liv Y9



Portland
Place
School

News





Portland
Place
School

News

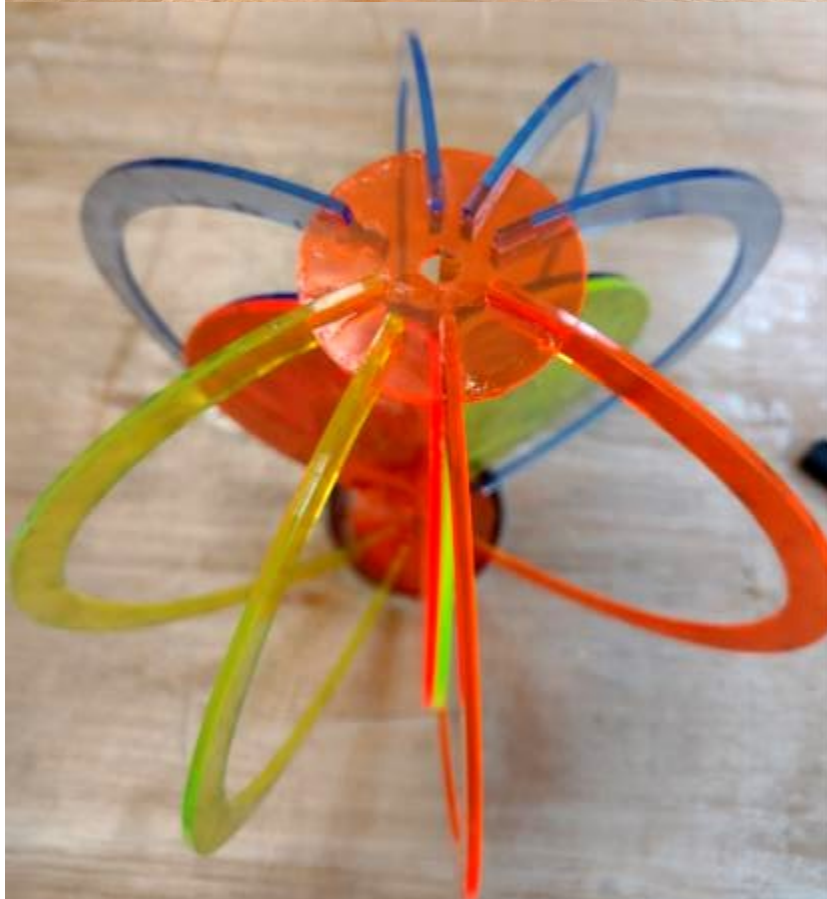
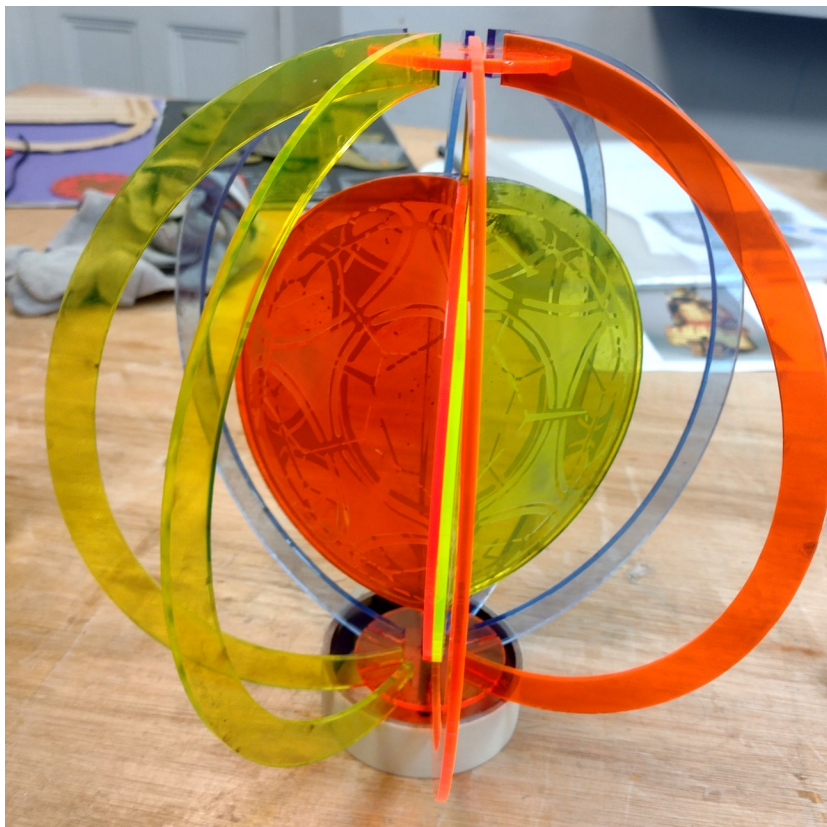


Isabelle, Kadi, Lingyi Y9



Portland
Place
School

News



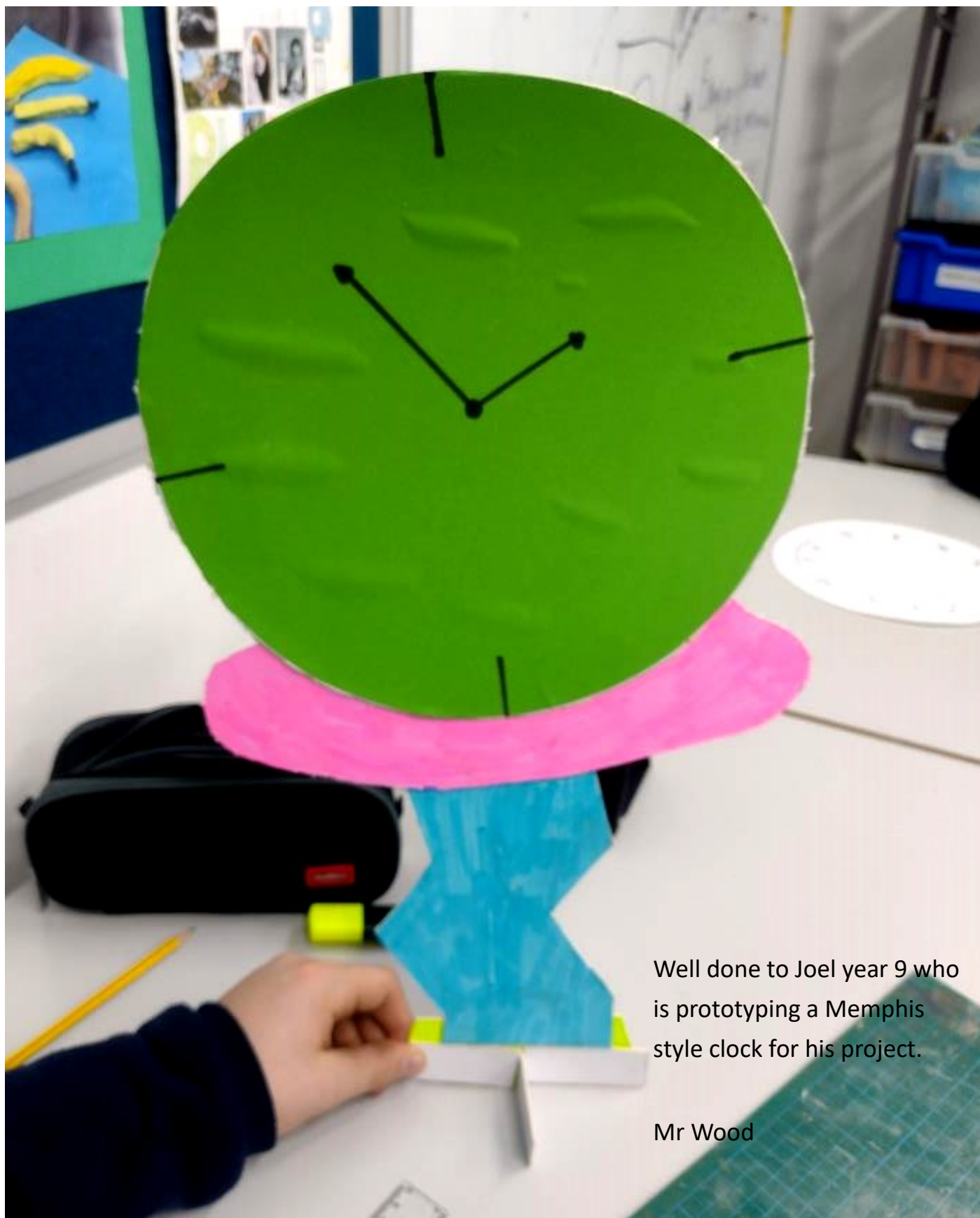
Design & Techn

Well done to Jessy year 11 who designed and made an interesting football inspired sculpture using CAD/CAM.



Portland
Place
School

News



Well done to Joel year 9 who is prototyping a Memphis style clock for his project.

Mr Wood



THE CARTOON MUSEUM TRIP

FUN
HERE

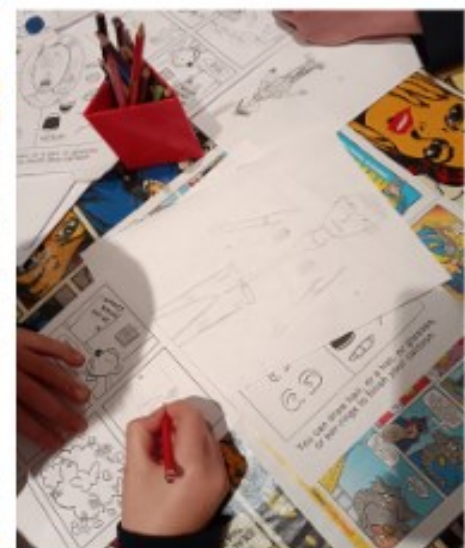
We learned to draw comic strip style faces and bodies, planned what we wanted to write about; discussed the sequence of events in our stories before beginning; we drew our mini comic strip stories...



"CREATE A COMIC STRIP!" Learning Lab and EAL workshop at the Cartoon Museum



The workshop was a fun extension to our literacy programme.





Portland
Place
School

News

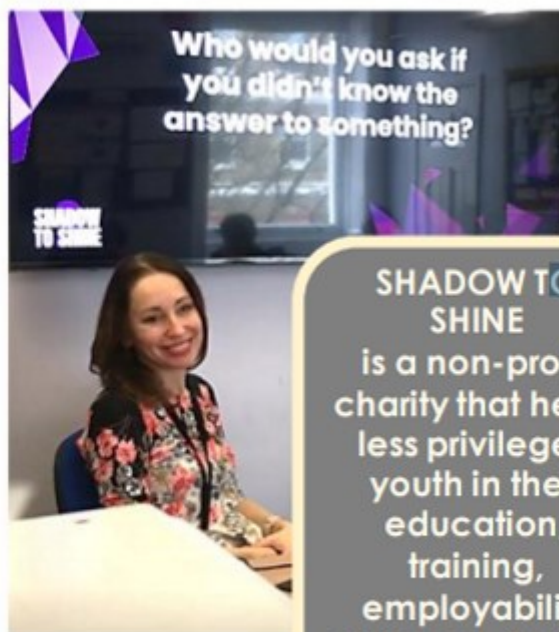
**SHADOW
TO SHINE**



CHARITY

This Wednesday, we hosted Korinna and Penelope from SHADOW TO SHINE

Empowering the next generation to step out of the shadows and shine!



SHADOW TO SHINE
is a non-profit charity that helps less privileged youth in their education, training, employability skills and finding employment





Portland
Place
School

News

ENRICHMENT



Mr Huebsch prepared a solid ground for our clay pottery work!
We made a set of **Valentine pottery** for sale next week!



Again, a big **THANK YOU** to Mr Huebsch and our students: Yura, Jones, Theo, Kai, Tom, Stanley and Mia!





Portland
Place
School

News

THE WALL OF KINDNESS

Amelia Z (Hybrid Y8) wants to thank Ahlam for making sure that the teachers knew my WiFi was bad if I disconnected from lessons.

Alex P (Hybrid Y10) wants to thank Inigo and Mason for being kind and supportive.

Maha K (Y11 Hybrid) wants to thank Miss McBain for always being so helpful and for providing so many resources.

To Sara for helping me with my work on Tuesday, she really helped me to understand something I was struggling with. CM

U12/13 Basketball vs Fairley House

On Thursday 26th January PPS u12/13 girls made their way to Queen Mother Sports Centre to take on Fairley House School in an entertaining game of basketball!

Portland started quickly, showing high tempo passing and good reactions when there was a turnover. In the early stages **Bibi**, **Maya** and **Zaya** all scored impressive baskets. Midway through the game Fairly started to string together a few nice passing moves and although the girls defended well, they were guilty of giving away too many fouls. Fairley did score some points and started to show more confidence. PPS didn't panic and soon started to dominate with some excellent drilling and passing on the counterattack, accurate shooting and good rebound work. PPS scored further baskets through **Bibi**, **Zaya**, **Maya** and **Mia** to take an impressive victory!

This was an excellent performance from our Y7/8 girls; they played with great intensity throughout, passed with pace and accuracy and the shooting from PPS was deadly! **Mia** made a number of interceptions and scored 4 baskets, **Zaya** was the top points scorer with 5 baskets - she barely missed a shot! Player of the match goes to **Bibi Underhill** who dribbled well, scored 3 great baskets and was very composed under pressure. Well done girls!





Portland Strike Back Against Maida Vale with Big Victory

Regents Park, bathed in sun, was witness to a cracking game of rugby on Monday, when Portland Place U13's and 14's went head-to-head with Maida Vale in a local derby. With the sun beaming down on a cold January afternoon, Portland Place managed to grind out a fantastic victory against their opposition.

It was a great start from Portland Place whose team ranged from students of both Years mixed together, but it was the captain, **Max** who started the game off best. After breaking the Maida Vale defence **Harrison** was able to slip the ball off to the attacking Max who made a try scoring start with another of his trade-mark dummies and dove into the corner.

From the very start Portland dominated the possession of play, moving the ball from forwards to backs with complete ease.

Spike, playing scrum half opened-up gaps as he sniped at the languishing defence. With players like **Koby** on his shoulder, PPS were making dents in the opposition line with ease, and it was the support play that saw Max, gain the ball, once again, and easily dive over the line for his second.

It wasn't just close-range snipes that PPS were scoring from but long range tries as **Hazuki** received the ball from a high kick and flew past the diving defence to score in the corner.



Sports report

It was attack upon attack from Portland Place with **Tec** and **Humphrey** both leading the charge. After a brilliant break from **Yaqoub**, who carried several defenders further down the pitch, dropped down to a ruck, before Spike picked up the ball and sprinted over the line.

Tec and Humphrey were not to be pushed aside and after growing in confidence both managed to get a try each before the end of the game. Humphrey's try was a fantastic team try, which saw nearly every player on the PPS pass through the line before **Kit** pushing forward and linked-up with **Dexter** before drawing the Maida Vale defence and passing it to Humphrey on the wing.

It was not all about great hands and movement off the ball but also power and straight up running and this was shown when **Abdulelah**, who gained the ball just outside the 22m line, took a straight line through the defence and was not to be stopped.

The time began to fall away but there was still time for Max and Tec to get another try before a fantastic team play saw offloads being thrown from **Arad**, **Danny** and **Yura** that allowed **Ollly** to gain the final pass, sprint through the middle and step the final defender. After the week before and the disappointment of the loss with Harrodian it was a great performance by the whole squad which included students like **Rocky** and **Felix** who were playing one of their first games of rugby for the school. Both of them showed great progress throughout the game and there were some big smiles throughout the team.

Portland Battle Against all Odds!



After a fantastic performance the week before it was a tough but spirited loss for the Portland Place U14's against Harrodian.

Making their way down to Barnes, the students were all focussed on the task that was in hand. With captain for the day, **Max**, pushing his teammates in the warm up, it was Max himself who made a superb start and broke the line to sprint in for a fabulous try.

This was the start that Portland were hoping to make, putting the opposition on the back foot as early as possible and this continued through the first few minutes with **Spike** and **Max** leading the charge, slicing open the defence and allowing **Yura** and **Danny** to push past into open space. With **Koby** making as many runs as tackles the start was something that the boys had been talking about.

The team's spirits were not to be dampened when they fell behind after some poor tackling let the hosts take a 3-1 lead. After some stern words from Mr Steward, there was an immediate reaction with both **Tec** and **Humphrey** using some silky footwork to break the defensive gates. Break after break were being pushed back by Harrodian and even after **Dexter** came close he was not able to offload to **Hazuki** to touch down.



Sports report



Max C and Max D led the team extremely well and it was a ludicrous dummy by Max C that saw Portland place pull back a try just before half-time. 3-2 down but the spirits were high with players focussing more on the positives than the negatives. The talk in the huddle was one of victory.

Straight after the half, Portland were put into defence but some solid scrummaging and a fantastic turnover by **Joel** saw a counterattack down the wing lead to a chip-and-chase from Tec who managed to collect his own kick and dab down a solid solo try. 3-3 and the tie was getting a bit more tense, but it was fantastic to see students like **Kit**, **Arad** and others pushing themselves to exhaustion to draw back the game. This willingness from the whole team saw Humphrey, once again break the line and finally touch down under the posts.

It seemed like the tie was going to get away from PPS as the hosts managed to grab two tries but it wasn't over. After putting the Harrodian fullback under pressure it was Max C and his iconic dummy that saw Portland Place snatch a final try from under the Harrodian lights.

The win wasn't meant to be, but it was an incredible performance by the quickly developing U14's team who keep getting better and better every week.



Revenge Tastes Better at London Met

It was sweet revenge from the U13 and U14 girls' team who managed to keep up their 100% record in basketball fixtures with a victory over arch-rivals Northbridge 42-14.

Northbridge had always been a banana skin for our girls' teams and we have had a number of losses through this school but tonight was not going to be the same outcome.

Marta, Bibi and **Mia** all led from the front as a fast-moving scoreboard saw the NBH heads start to be turned as the score kept rising against them. Marta scored a number of nets in the first quarter along with Bibi and **Zaya** who couldn't seem to miss in front of the net.

Portland were on top in every aspect of the game, intercepting passes, beating NBH to rebounds and forcing the opposition into making some silly mistakes. In the first and second quarter PPS tallied up a brilliant score. After a loss against the same team in netball the revenge seemed written in the stars, as NBH brought on their impact player who couldn't seem to beat the forceful defence from **Cora, Georgie** and the rest of the team. Pushing NBH further back during the quarter the penalties were starting to rise, and Portland took advantage of this with both Marta and **Jazz** driving forward and sinking some great team nets.



Portland
Place
School

Sports report

It was a fantastic team performance that saw Portland completely break the North Bridge hearts as they continued to attack and continued to score at will. **Maya** got on the score board after a clean intercept from Cora, saw the team pass the ball down the court to Maya who put the game to bed.

After so many heartbreaks and painful losses it was a fantastic performance from these students that saw them come together and final get rid of the monkey on their back that was a victory against NBH!!



Next Week's Clubs & Fixtures

- 
- Monday 6th Feb: Table tennis club, PPS Hall, 1.10-1.45pm
Karate Club, PPS Hall 4.00-5.00pm
- Tuesday 7th Feb: Y6/7 Rugby vs North Bridge House Hampstead, 2.00pm, Regent's Park
Y7/8 Girls' badminton vs North Bridge Canonbury, 4.00pm, Britannia Leisure Centre
Football club, Westway Sports Centre (transport provided) 3.50pm–5.30pm
- Wednesday 8th Feb: U16 Netball vs St James B, away, 2.30pm
U15/16 Rugby vs North Bridge House Hampstead, Regent's Park, 2.00pm
Running club, Regent's Park, 12.50pm – 1.20pm
GCSE PE Revision Club. Rm G31, 1.10pm – 1.45pm
Fencing club, PPS Hall, 4.00-5.00pm
- Thursday 9th Feb: Westminster Swimming Gala, Queen Mother Sports Centre, 12pm – 3pm
Weight training club, PPS changing rooms, 12.50-1.30pm
Dance club, Rm 11, 12.50-1.30pm
Basketball club, Church Street Leisure Centre, 4.00-5.15pm

Enrichment—First Half of Spring Term 2023

| Activity | Staff | Room |
|--------------------------|---------------------|---|
| Advanced Maths | TTO | G21 |
| Basketball (Junior) | SRI & MMC | Offsite. Meet PE changing rooms at 1.50pm |
| Boxing | JKU | Offsite. Meet PE changing rooms at 1.50pm |
| Charity & Community | ECO | Room 24 & offsite |
| Climbing | WBR & BSO | Offsite. Meet in Room 1 at 1.30pm |
| Cooking Club | KPA | Dining Hall & Kitchen |
| F45 Fitness | CBY & TLA | Offsite |
| Fencing | LVW & FSY | PP Hall |
| Filming Techniques | SSA | G31 |
| Horrible Histories | PLE & JWO | Room 22 |
| Local Area Investigators | KOL | Room 10 |
| Polyglot | PZA & DFL | Room 34 |
| PPS Enterprise | MTH & RLE | G34 |
| Prop Making | DWO, LDE & CHU | B1 |
| Production—'Grease' | RAL, SHI, AJU & CBO | Drama Studio & Room 1 |
| Touch Rugby (Senior) | LST | Offsite. Meet PE Changing Rooms at 1.50pm |
| Velo Park | TTC & HIS | Offsite. 12.50pm lunch leave from GPS |
| Winter Knitting | CFL & CBI | Room 36 |

Clubs for Spring Term 2023

| Day | Time | Activity | Staff | Location | Year Groups |
|-------|-------------|---------------------------|---------------|---------------|-------------|
| Mon | 12:50-13:50 | Table Tennis Club | JKU | PP Hall | All |
| Mon | 12:50-13:30 | KS4 Design Drop-In Clinic | DWO | B1 | 10 & 11 |
| Mon | 12:50-13:45 | String Ensemble | R H'white | R1 | All |
| Mon | 13:15-13:45 | Chemistry Revision Club | HSI | Lab 3 | 10 & 11 |
| Mon | 13:15-13:45 | Year 9 Science Clinic | RLE | Lab 2 | 9 |
| Mon | 12:50-13:45 | Chinese Club | TLA | G33 | All |
| Mon | 12:50-13:45 | Rock Band | DMC | R2 | All |
| Mon | 13:15-13:45 | UKMT Maths Challenge | AIS | 34 | All |
| Mon | 13:15-13:40 | Board Games | DFL & ECO | R11 | 6-9 |
| Mon | 15:45-17:00 | KS4 Design Drop-In Clinic | DWO | B1 | 10 & 11 |
| Tues | 12:50-13:30 | KS3 Design Club | DWO | B1 | 8 & 9 |
| Tues | 13:15-13:45 | Year 9 Science Clinic | RLE | Lab 2 | 9 |
| Tues | 12:50-13:45 | PPS Choir | SHI & CBO | R1 | All |
| Tues | 13:15-13:45 | Physics Revision Club | WBR | Lab 3 | 10 & 11 |
| Tues | 13:15-13:45 | English Language Surgery | JHU | R43 | 11 |
| Tues | 15:50-17:15 | Football Club | tbc | Regents Park | All |
| Tues | 16:00-17:00 | KS4 GCSE Art Club | LDE | Art Studio 1 | 10 & 11 |
| Tues | 15:45-17:00 | KS4 Design Drop-In Clinic | DWO | B1 | 10 & 11 |
| Wed | 12:50-13:30 | KS4 Design Drop-In Clinic | DWO | B1 | 10 & 11 |
| Wed | 12:50-13:45 | Music Theory Club | ZBO | R42 | All |
| Wed | 12:50-13:50 | Russian Club | PZA | R24 | All |
| Wed | 12:50-13:45 | Percussion Ensemble | J Morrison | R2 | All |
| Wed | 12:50-13:50 | Running Club | LST | Regents Park | All |
| Wed | 15:45-17:00 | KS4 Design Drop-In Clinic | DWO | B1 | 10 & 11 |
| Wed | 16:00-17:00 | Fencing Club | Fencing coach | PP Hall | All |
| Thurs | 12:50-13:45 | Woodwind Ensemble | J Slack | R1 | All |
| Thurs | 12:50-13:30 | KS3 Drama Club | TNO | Drama Studio | 6-9 |
| Thurs | 12:50-13:50 | Dance Club | CBY | R11 | All |
| Thurs | 12:50-13:50 | Beginner French / Spanish | FSY | G33 | 6 – 9 |
| Thurs | 12:50-13:30 | Weight Training Club | SRI | Boys C/ Rooms | All |

** by invitation only for KS3, Art Scholarship holders must attend

Clubs for Spring Term 2023

| Day | Time | Activity | Staff | Location | Year Groups |
|-------|-------------|---------------------------|-----------|----------------|-----------------|
| Thurs | 13:15-13:45 | Biology Revision Club | RLE | Science Lab 2 | 10 & 11 |
| Thurs | 13:15-13:45 | Coding Club | MMC | 33 | 6-8 |
| Thurs | 13:15-13:45 | Spanish GCSE Club | CFL | G33 | 10 & 11 |
| Thurs | 16:00-17:00 | PPS Chamber Choir | CBO | R1 | All by audition |
| Thurs | 16:00-17:00 | Art Club | TMO & LDE | Art 1 & 2 | All ** |
| Thurs | 16:00-17:15 | Basketball Club | SRI | Leisure Centre | All until 26/1 |
| Fri | 12:50-13:45 | Brass Ensemble | W Brown | R2 | All |
| Fri | 12:50-13:50 | Japanese | Yekta | R24 | 7 – 9 |
| Fri | 12:50-13:30 | KS4 Design Drop-In Clinic | DWO | B1 | 10 & 11 |
| Fri | 13:15-13:45 | Science Exam Skills | DBL | Science Lab 1 | 10 & 11 |
| Fri | 13:15-13:45 | KS4 Maths Club | KPA | Science Lab 1 | 10 & 11 |
| Fri | 13:15-13:45 | KS3 Maths Club | AZE | 33 | 6 – 9 |
| Fri | 13:15-13:45 | French Bilingual Club | TLA | B3 | 7 – 9 |
| Fri | 15:45-17:00 | KS4 Design Drop-In Clinic | DWO | B1 | 10 & 11 |

** by invitation only for KS3, Art Scholarship holders must attend

Term Dates

Academic Year 2022/2023

Autumn Term 2022

| | |
|----------------------------------|---|
| Staff Inset (closed to students) | Wednesday 31 August – Thursday 1 September 2022 |
| Induction (new students) | Friday 2 September 2022 |
| Term Starts | Monday 5 September 2022 |
| Half term | Monday 17 October – Friday 28 October 2022 |
| End of term | Friday 16 December 2022 |
| Christmas holiday | Monday 19 December 2022 – Friday 6 January 2023 |

Spring Term 2023

| | |
|----------------------------------|--|
| Staff Inset (closed to students) | Monday 9 January 2023 |
| Term Starts | Tuesday 10 January 2023 |
| Half term | Monday 13 February – Friday 17 February 2023 |
| End of Term | Friday 31 March 2023 |
| Easter holiday | Monday 3 April – Friday 21 April 2023 |

Summer Term 2023

| | |
|----------------------------------|------------------------------------|
| Staff Inset (closed to students) | Tuesday 24 April 2023 |
| Term Starts | Tuesday 25 April 2023 |
| Bank Holiday | Monday 1 May (school closed) |
| Half term Holiday | Monday 29 May – Friday 2 June 2023 |
| End of Term | Friday 7 July 2023 |



56-58 Portland Place
London W1B 1NJ
Tel: 020 7307 8700
(Main Switchboard)

GPS Building:

143-149 Great Portland St
London W1W 6QN

admin@portland-place.co.uk
www.portland-place.co.uk



Portland
Place
School



Thank you for reading

FOLLOW US



@PortlandPlaceSchool



@PortlandPlaceHD



Portland Place School