

The Weekly Buzz

28 November 2022



Artwork by Lucy N



Portland
Place
School

Noticeboard

Lunch Menu

w/c 28th November 2022

Week 3 Lunch Menu

MONDAY

Main:
Sweet and Sour Pork

Meat Free:
Sweet and Sour Veg

To go with:
Rice
Sweetcorn
Sauté Pepper
Courgette

Dessert:
Shortbread

Tuesday

Main:
Beef Bolognese

Meat Free:
Vegan Bolognese

To go with:
Spaghetti
Broccoli
Kale
Garlic Bread

Dessert:
Flapjack

Wednesday

Main:
Roasted Chicken

Meat Free:
Peas Pesto & Sundried
Tomato Pasta

To go with:
Potato
Carrot
Cauliflower
Sprouts

Dessert:
Chocolate-Chip Cake

THURSDAY

Main:
Chicken Curry

Meat Free:
Vegan Curry

To go with:
Rice
Raspberry Coconut Cake
Butter nut
Pepper
Broccoli

Dessert:

FRIDAY

Main:
Fish Fingers

Meat Free:
Stuffed Peppers

To go with:
Chips
Baked Beans
Peas, Carrots

Dessert:
Rice Cakes

The FUTURE of FOOD

ON THE MENU EVERYDAY

- ☆ Soup of the Day
- ☆ Salad Bar
- ☆ Fresh Fruit
- ☆ Yoghurt

Allergen Key: 1. Milk, 2. Fish, 3. Gluten, 4. Peanuts, 5. Tree nuts, 6. Soya, 7. Sesame, 8. Lupin, 9. Shellfish, 10. Molluscs, 11. Egg, 12. Sulphite, 13. Celery, 14. Mustard
MENU IS SUBJECT TO CHANGE SHOULD INGREDIENTS BE UNAVAILABLE

Gluten-free options available each day



Portland
Place
School

Noticeboard

DATES FOR THE DIARY 2022

THURS 01 DEC - LANGUAGES DAY

THURS 08 DEC - CHRISTMAS CAROL
SERVICE @ ST MARYLEBONE PARISH
CHURCH (11.15AM-12.15PM)

TUES 13 DEC - CHRISTMAS CONCERT
@ REGENT HALL (6.30PM-9.00PM)

FRI 16 DEC - END OF TERM



Portland
Place
School

Noticeboard

GRACIAS

GUTEN TAG

HELLO

HOLA

TAKK

BONJOUR

HELLO

BONJOUR

LANGUAGES DAY

THURSDAY 1ST DECEMBER – PLEASE DONATE!

GRACIAS

GUTEN TAG

HELLO

HOLA

TAKK

BONJOUR



Portland
Place
School

Noticeboard

This year, our annual Languages Day is back, on Thursday 1st December. It will be a day where we celebrate diversity and languages around the world.

Students are invited to bake international cakes (but NOT with nuts and should have a list of ingredients that they used in their cakes) and dress up with the colour of their flag, a traditional outfit or a famous character from their country.

Students will NOT be able to pay for cakes in cash, they will need to donate £2 on Parent Pay ahead of the day and then £1 extra for each slice of cake they want to purchase. All the money goes to Unicef but we cannot accept cash anymore.

Merci, gracias, thank you!

Mr Lalande



Portland
Place
School

Noticeboard



Portland
Place
School



PLEASE JOIN US FOR OUR

CHRISTMAS CAROL SERVICE

THURS 8TH DECEMBER 2022
11.15AM-12.15PM

St Marylebone Parish Church
17 Marylebone Road
NW1 5LT

Refreshments and mince
pies will follow at Portland
Place School, 56-58
Portland Place, W1B 1NJ

No need to RSVP.
Please arrive 10 minutes
early to be seated



Portland
Place
School



Noticeboard

PORTLAND PLACE SCHOOL

Music Department



presents

Christmas Concert 2022

Tuesday 13th December

6.30pm

Regent Hall



Portland
Place
School

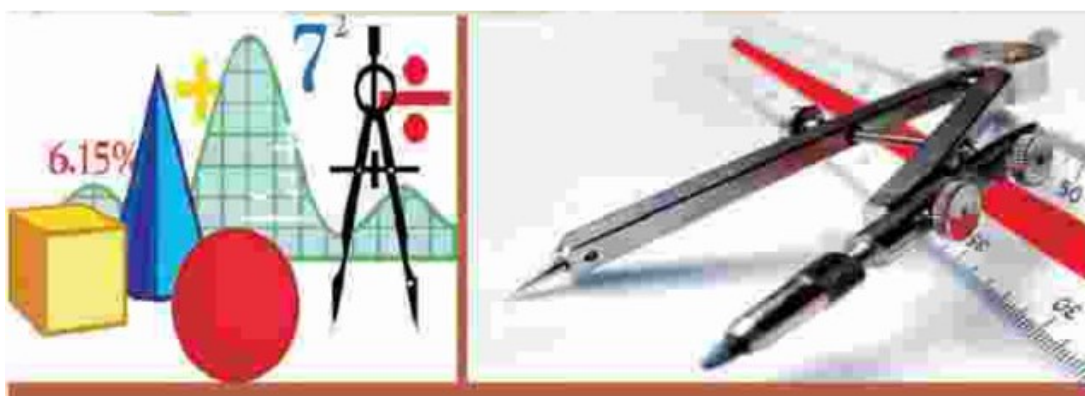
Noticeboard

UKMT MATHS CHALLENGE CLUB

Monday Lunch Time
1:15 – 1:45PM

PPS
Room 34

Teacher
A.Islam



PRACTICE WORKING SYSTEMATICALLY
PATTERN SPOTTING
WORKING BACKWARDS

REASONING LOGICALLY
VISUALISING
CONJECTURING

**New
Club!**



Library News

- E-platform has now been integrated with our library catalogue so you can now see available e-books when searching the catalogue
- **Book of the week**



*Gripping read with
sci-fi elements
and an inspiring
neurodivergent heroine*
Mrs Carvalho

Interest age: 9-12

Reading age: 10+

9-11 years

12+

Mystery

Science fiction

Autistic spectrum

ADHD

Inclusive

Friendship

Science

Mental health

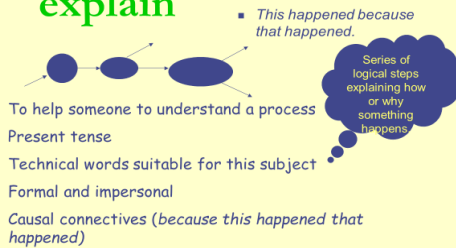


Portland
Place
School

Noticeboard

Literacy Corner

6. Writing to explain

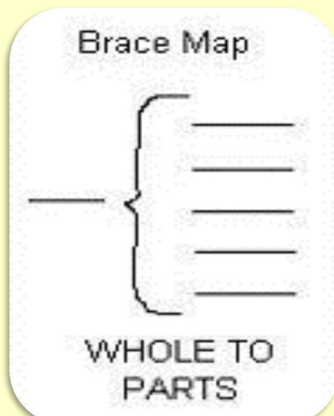


PLANNING WRITING to Explain

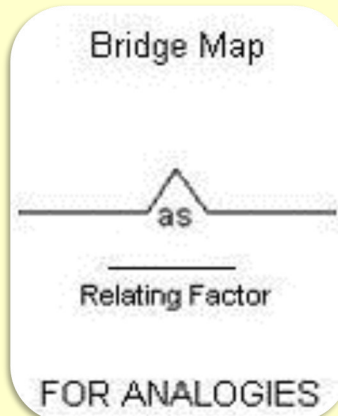
Examples:

1. instructions
2. directions
3. steps and procedures
4. how-to
5. recipes

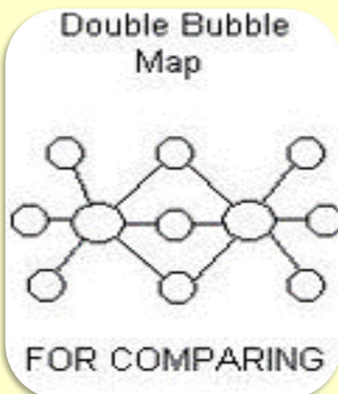
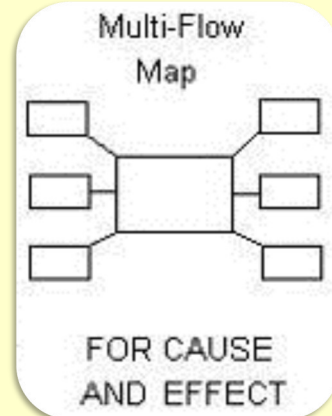
What are the component parts and subparts of this whole physical object?



What is the analogy being used?
What is the guiding metaphor?



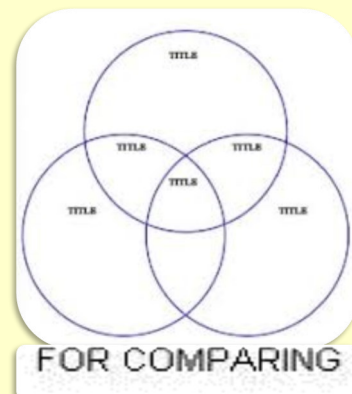
What are the causes and effects of this event?
What might happen next?



What are the similar and different qualities of these things?
Which qualities do you value most? Why?



What are the main ideas, supporting ideas, and details in this information?



What are the similar and different qualities of these things?
Which qualities do you value most? Why?



Noticeboard

Literacy Corner

5 Writing to persuade



- This is what I think you should do/ think.

Series of points within paragraphs supporting one view point. Logical order

To influence how people think

Emotive language

Personal language

Persuasive writing is used to convince the reader to agree with the author. To do that, you need to build an argument and support it with details.

Examples:

- Essay about 'Saving our Planet'
- Speech on 'Animal Rights'
- A letter to a local MP to support a cause
- A leaflet; A TV advert
- Remember: **Persuasive = Persuade**

Persuasive Writers Remember Their

OREOS

State your opinion clearly.

O
pinion

R
eason

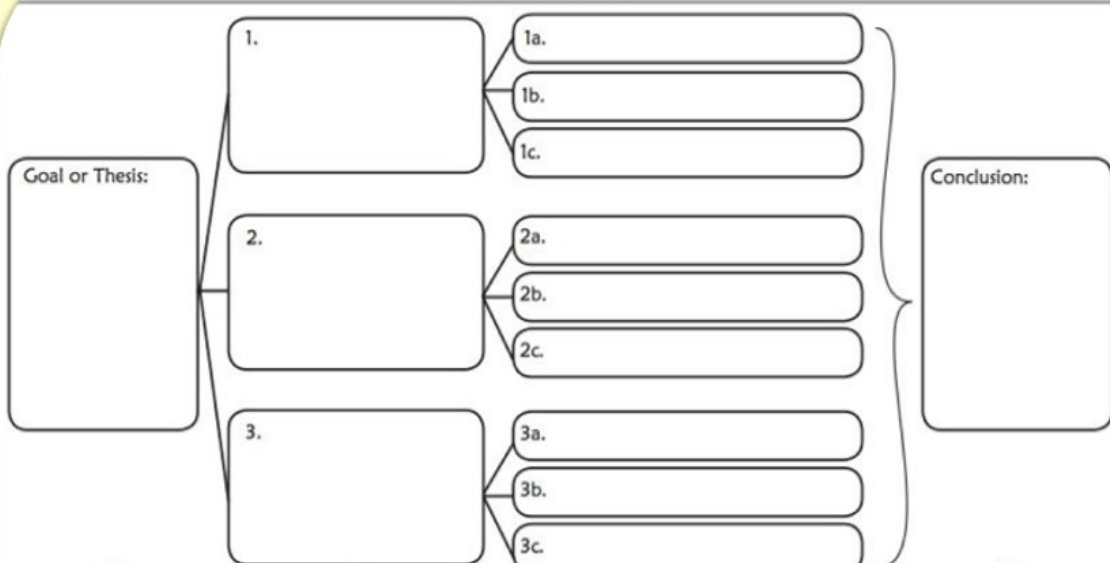
E
xample

R
eason

E
xample

O
pinion restated

Persuasion Map



Goal or Thesis:

Conclusion:

Goal or Thesis: A goal or thesis is a statement that describes one side of an arguable viewpoint. Write your own goal or thesis here.

Main Reasons: Briefly state three main reasons that would convince someone that your goal or thesis is valid.

Facts or Examples: Write three facts or examples to support each of your main reasons and validate your goal or thesis.

Conclusion: Conclude your argument by summarizing the most important details of the argument and stating once again what the reader is to believe or do.



Noticeboard

Literacy Corner

5 Writing to persuade

- This is what I think you should do/ think.



Series of points within paragraphs supporting one view point. Logical order

To influence how people think

Emotive language

Personal language

PLANNING WRITING to Persuade 2

Persuasion Map

Class: _____ Teacher: _____

To persuade means to make someone come around to your point of view. To do that, you need to build an argument and support it with details. Here's how to map it all out.

1. Choose a topic and your position for or against it.
2. Provide three reasons that support your position.
3. Below each reason write two facts that support it.

Topic: Muggle-born children should continue to be allowed to attend Hogwarts.

Reason:

Have been going to Hogwarts for a long time

Reason:

Very talented examples of Muggle-born

Reason:

Many myths about Muggle-born

Supporting Details:

3 of 4 Hogwarts founders OK with Muggle-born

Supporting Details:

Hermione

Supporting Details:

Ministry of Magic trying to clear up myths

Supporting Details:

Only Slytherin was against it

Supporting Details:

Harry Potter's mom

Supporting Details:

Muggle-born have just as much ability as pure-bloods



Noticeboard

Literacy Corner

5 Writing to persuade



- This is what I think you should do/think.

Series of points within paragraphs supporting one view point. Logical one.

To influence how people think

Emotive language

Personal language

PLANNING WRITING to Persuade 3

Persuasive Writing

P

PERSONAL PRONOUNS (WE, YOU, US, THEY). **EFFECT:** STRENGTHEN, BEFRIEND, UNITE & SEPARATE.
"You can make a difference."

in

A

ALLITERATION (WORDS BEGINNING WITH THE SAME SOUND) **EFFECT:** EMPHASISES/FOCUSES ATTENTION ON POINT
"A really rich and rewarding opportunity"

ANECDOTE A SHORT PERSONAL STORY/MEMORY **EFFECT:** ADDS AUTHENTICITY/RELATABILITY. CAN BE EVOCATIVE
"I'll always remember year 7, because that was the year I was horrendously bullied. I know what it feels like to..."

F

FACTS (SOMETHING WE KNOW OR HAVE PROVEN TO BE TRUE) **EFFECT:** ADDS PLAUSIBILITY TO AN ARGUMENT
"We know/it has been proven/research has shown that... English is the best subject."

O

OPINION (ADVICE/PERSONAL VIEW) **EFFECT:** ADDS PERSONAL/RELATABLE EVIDENCE/INVESTMENT
"I strongly believe that we need to..."

R

RHETORICAL QUESTIONS (QUESTION ASKED FOR EFFECT). **EFFECT:** ENGAGE, PROVOKES THOUGHT
"How many more elephants have to die before we start enforcing harsher punishments on the ivory trade?"

REPETITION / REITERATION (REPEATING INFORMATION) **EFFECT:** EMPHASIS & CLARITY
"It is everybody's responsibility to keep our school clean, and everybody can do more."
"Research has found that 55% of girls..." "If 65% of girls are more likely too..."

E

EMOTIVE LANGUAGE (ENGAGES AUDIENCES/READER'S EMOTIONS) **EFFECT:** HELPS CREATE SUPPORT/OPPOSITION
"An innocent bystander was brutally attacked by a violent thug by Tesco's last Tuesday."

EXAGGERATION/HYPERBOLE (STATEMENTS/CLAIMS NOT TO BE TAKEN SERIOUSLY) **EFFECT:** DRAMATIC, HEIGHTENS EMOTIONS, MORE INTENSE
"I died from laughing when I learnt that..." "This week I had six tonnes of homework to do – it's too much!"

S

STATISTICS (PERCENTAGES, FRACTIONS) **EFFECT:** ADDS PLAUSIBILITY AND GARNERS SUPPORT FOR ARGUMENT.
"74% of people agree..."

T

THREE (RULE OF) (LISTING IN GROUPS OF THREE) **EFFECT:** MEMORABLE, CONCISE, EMPHASIS
"Fast, convenient and secure".

TOPE (THE ATTITUDE OF A PIECE OF WRITING) **EFFECT:** DRAWS IN THE AUDIENCE
Sincere, ironic, sarcastic, sentimental, enthusiastic, apathetic, bossy, instructive, assertive, outraged...



Portland
Place
School

Noticeboard

Getting Unstuck

Are you
STUCK?

Try these things:

1. Ask a friend.
2. Read the question again.
3. Split the question up.
4. Ask yourself - what do I already know that could help me?
5. Use a dictionary.
6. Use a reference book.
7. Check your strategy.
8. Share the problem.
9. Go to another problem and come back to the bit you are stuck on.
10. Ask the teacher.

© S Miller, CCPS

At Portland Place we encourage our students to develop their independent learning skills and come up with a range of strategies for getting unstuck when they complete classwork and homework. This way they learn to become problem solvers which is the deeper purpose of their education.

Ms Florea



Portland
Place
School

Noticeboard



MOVEMBER[®]



BIZARRE



BRILLIANT

Update in next issue!

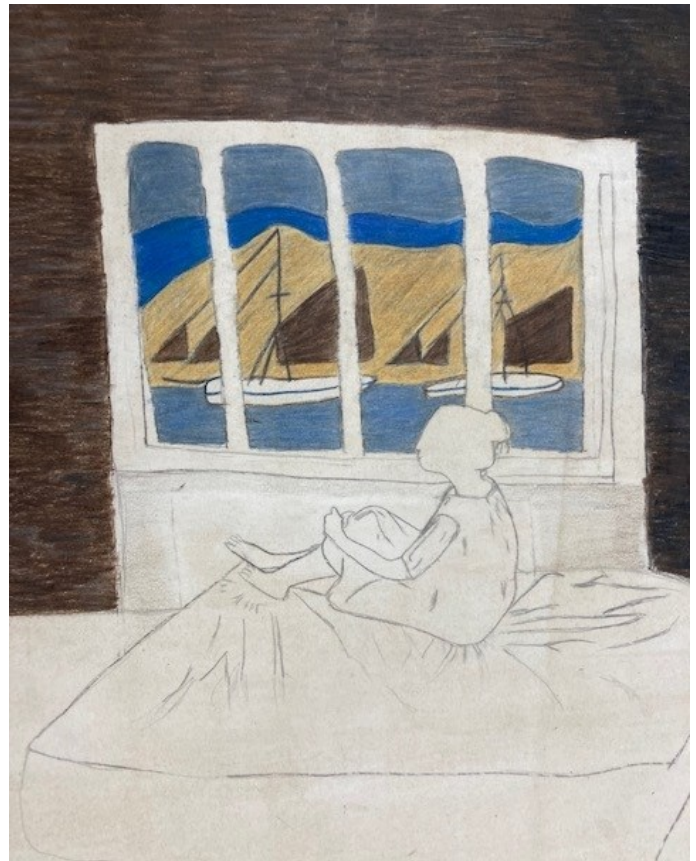


Portland
Place
School

News



Art
Y11

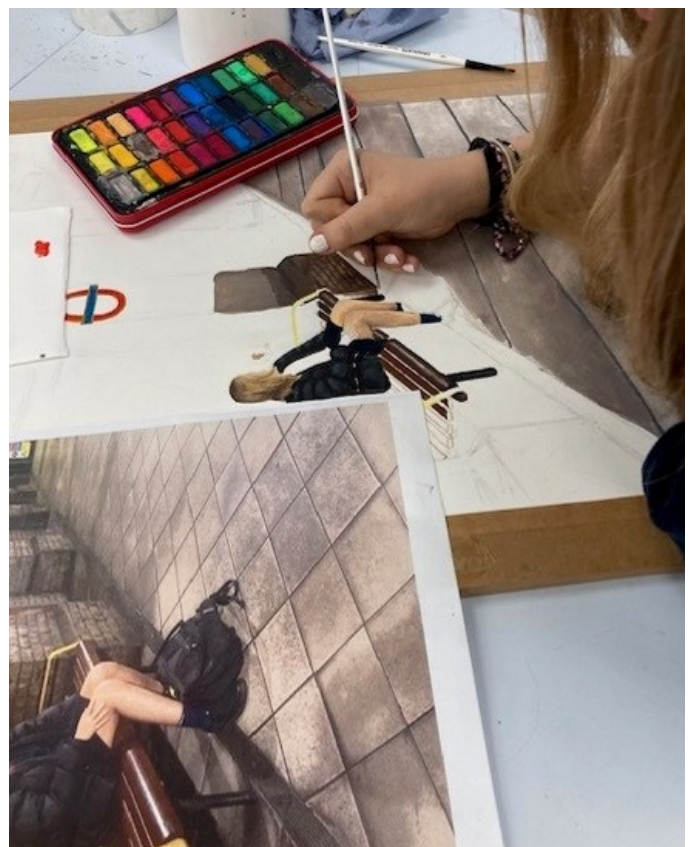


Year 11 Mock Art Exam

Amazing work coming out of the art studio on day 1 of the Art mock exams.

Another 5 hours to go. Watch this space for finished pieces!

Well done everyone,
Ms Dever





Portland
Place
School

News





Portland
Place
School

News

ENGLISH

Y10 wrote poems in response to artwork of their choice. Here are Felix and Mia's responses:

Transport for London

By Felix

I do not move my legs, as to not manspread
I am as still as a stone statue,
My lips do not move, as to not mansplain,
Avoiding conversation is a key part of the journey home,

The poster above me tells people to avoid me,
It warns them of my relations,
There is no poster for her, however,
No, no, she doesn't do it.

The seat next to, and opposite is empty,
The choice is hers,
I do my best to do nothing,
Yet once again, I lose the race,
The seat next to me is still empty.

**In response to advertising posters on the
underground**



Portland
Place
School

News

Starry Night **by Mia Y10 Hybrid School**

**Like the sun, I burn eternally
In a bright fire,
My love shall take on any cloudburst
For it is no less than those flames.
I have given my all
To give you the world and more,
For nothing is more important
Than your phosphorescing delirium;
But once I watched your joy dwindle
Into nothingness, much like the abyss,
I realised that in truth
I couldn't give you everything.
For I am the moon
And you are the stars,
The distance between us so nigh, yet
so far apart.**

**Inspired by 'The Starry Night'
by Van Gogh**



Portland
Place
School

News



Design

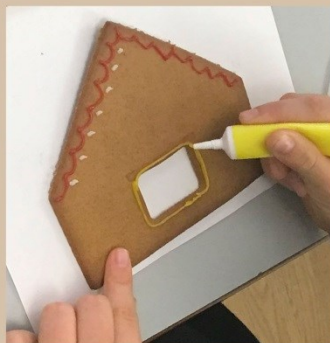
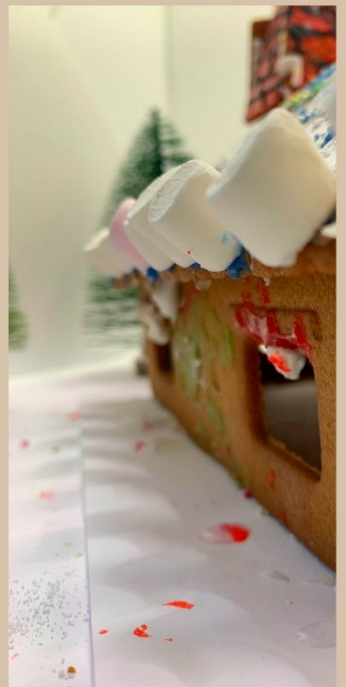


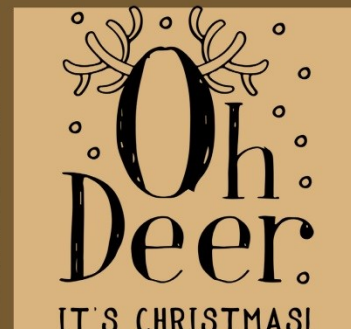
Well done to **Maryam** and **Edwin** Year 11 who are both developing interesting sculptures.

Mr Wood

enrichment

· PHOTOGRAPHY ·





GINGERBREAD HOUSES MAKING



Oh
Deer
IT'S CHRISTMAS!





LEGO Design Club Update

This week was a free-building week in LEGO Design Club – with some very interested and varied builds happening!

Mr Tasić



Here are a few snaps of our work courtesy of Mr Lalande...

- ♦ Kit developing an action-packed film set.
- ♦ Abdullah's piano modelled from images online.
- ♦ Lucas with his turbine nacelle, a remarkable arrangement of gears accelerating a single rotation into about 15 (1:15 drive).
- ♦ The "Year 9 Ladz" with their amazing spaceship – Max providing the colour-coordination with the purple pieces and delta wing design.





Portland
Place
School

News

Mad Scientists!



Our Mad Scientists
enjoyed testing different
metal ions using Bunsen
Burners this week!





Portland
Place
School

News

Pop Art Project

— inspired by Roy Lichtenstein



Gabriel



Portland
Place
School

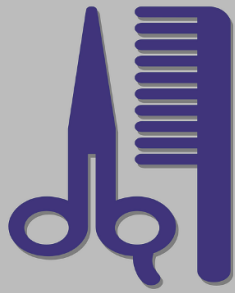
News





Portland
Place
School

News



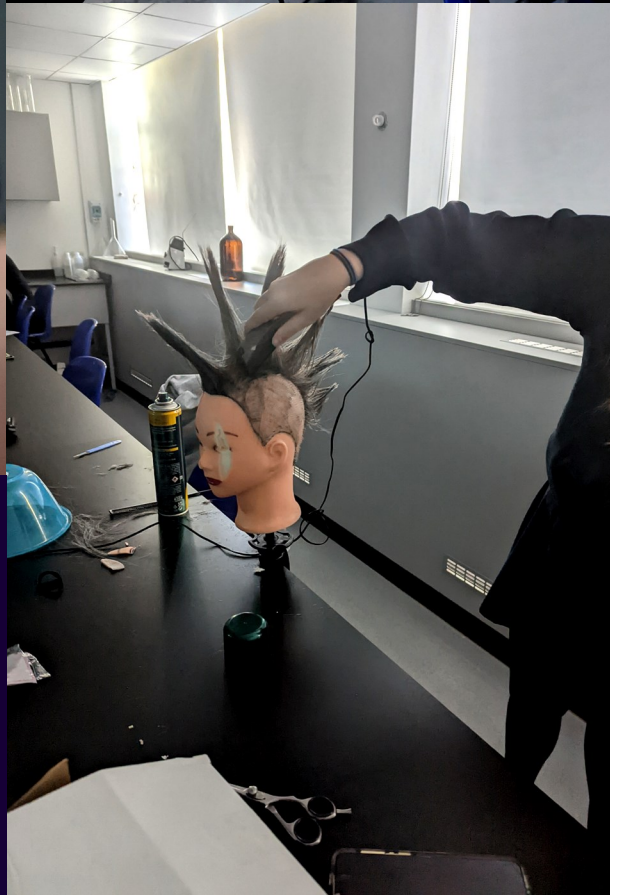
Hairdressing Enrichment





Portland
Place
School

News



This week we decided to go rogue, from the bowl cut to cyber punk! We learned a variety of techniques, from cutting a straight jawline bob to then backcombing and styling the cyber punk hair. Mr Bland



Portland
Place
School

News

Science

Fabulous work from our Year 8 Scientists this week! Students were given the autonomy to plan their own investigation into how different factors affect the solubility of substances!







Portland
Place
School

News

ZSL
LONDON
ZOO

Enrichment



Our second workshop was dedicated to evaluating human impact on the extinction of the animals. We were also debating some controversial questions...

Ms Maher and Ms Coates

WEEK 03: ZSL - WILDLIFE UNDER THREAT

1. Habitat Destruction

2. Climate Change

3. Pollution

4. Introduced Species

5. Hunting and Illegal Trade for:

- Sport and Leisure
- Decorative Objects and Souvenirs
- Clothes and accessories
- Medicine
- Pets
- Food

Bluefin Tuna - 92% decrease in population!

Lemur Leopard - 100 left!

Javan Rhino - only 60 left!

Week 3:



Portland
Place
School

News






DISAGREE

DEBATING


AGREE



☐ Should people who buy these medicines, be punished in some way?

WHAT ZSL IS DOING?

1. Research
2. Working with governments
3. Protecting the animals in the ZOO
4. Reintroductions
5. Protecting animals in the wild
6. Working with local people
6. Education



BRAIN	TO CURE LAZINESS & PI
EYEBALL	FOR EPILEPSY, MALAR, NERVOUSNESS OR FEV IN CHILDREN, CONVULS AND CATARACTS
NOSE	FOR EPILEPSY AND CHILDREN'S CONVULSIONS
WHISKERS	FOR TOOTHACHE
TEETH	OR RABIES, ASTHMA AND SORES ON THE PENIS
FAT	OR VOMITING, DOG BIT HAEMORRHOIDS AND CHILDREN'S SCALP CONDITIONS

THINGS YOU CAN DO TO HELP

- ☐ Don't buy animal souvenirs on holiday
- ☐ Don't buy 'herbal' or 'traditional' Chinese medicine unless the shop displays the Met Police label
- ☐ Don't buy real fur or snake skin clothes and accessories
- ☐ Do buy fish with are sustainably resourced
- ☐ Do ask the pet shop where they get their animals from before buying



Portland
Place
School

News



THE WALL OF KINDNESS

Thank you very much to all the staff who have run assemblies so far this year: Miss Florea, Mr Steward, Mr Lalande, Mr Rider, Mrs Thorne, Miss Salmah, Mr Wood and Ms Carvalho. I really appreciate your support and commitment. Mr Maslona

Will would like to shout out Ayub for being kind and friendly in Y8 Hybrid.

Thanks to Jude in Y10 for showing kindness by staying during his break on Friday and offering to help me move my tables around in the Art studio. It was much appreciated, Miss Dever.

Thank you to Leo who found Felix's lost art folder and returned it to him. Life saver!

Maha (Hybrid Y11) would like to shout out Ms Thorne for complimenting her headscarf and to thank Phu who let everyone share his calculator for Science Practical Morning.

Many thanks to Gene who helped me with history, much appreciated – Alex (Y11)

Year 8 Netball vs North Bridge House Canonbury



Portland Place were unable to take down a strong North Bridge team, who ran out convincing winners on Monday evening. With a few players missing it allowed the younger students to raise their game and show Mr Steward exactly what they were able to do. This was the mentality of the game as they started off the stronger in the first quarter, running the opposition off the ball and increasing the pressure on the older group.




Jazz started in Centre with **Rhiya**, **Mia (Captain)** and **Bibi** starting in the attack. These four played like a well-oiled string quartet, working in complete harmony, moving the ball further into the attacking third and creating many chances for Bibi in the GS bib. Although they were dominant in attack there were some strong performances from defensive players.



Yasmin was fantastic at GK as she marked her opponent out of the game, allowing her only one shot throughout the half.



Sports report




A few changes were needed, and Jazz was moved to mark the dangerous GA for North Bridge and **Zaya** was moved further forward to increase the speed of play and she did this using both Rhiya and substitute, **Kansas**, who together created a number of attacks on the opposition net. The movement of all the players allowed centre, **Maya**, to break away from her marker and there were several opportunities to score but some of the PPS shooting didn't manage to swish the net.

The final quarter saw some tired legs from the PPS squad, but they carried on putting the pressure throughout from GS to GK. This was the best quarter by the PPS students, and it saw us only drop 1 net. The game started to get away from the PPS squad who continued throughout the fixture, not giving up at any point. Although it was a defeat for the students, the performance from them was exceptional.

The final whistle was blown, the red-faced students shook each other's hands, and three cheers were given. With Portland Place giving their Player of the Match, **Jazz** was given the North Bridge Player of the Match.

Each student was given a position and some advice, and they all took on board each word and gave it their all.

U15/16 Football vs North Bridge House Canonbury



Weather conditions were perfect for the football match on Friday and all the girls were raring to go. After last minute drop-outs, the year 9 girls came to the rescue to play so the game could still go ahead. In the squad representing PPS, we had **Isabella, Anna, Samara, Sasha, Kadi, Olivia, Cora, Tess** and **Isabelle**. The game got off to a good start and the girls knew exactly what they had to do. NBHC unfortunately got straight through our defensive line, and we conceded a goal early on. Our girls gathered their composure and went on the attack. We had some impressive runs through the middle and up the wing by **Olivia** and **Sasha** to try and get the ball up the field into the opposition's goal line but NBHC quickly regained possession and were back on the attack. Despite some magnificent saves by **Anna**, another 2 goals were scored at the half time whistle.

After a half time talk and some changes made, the girls regrouped ready for the second half. They made a magnificent come back and I have never felt prouder. We looked exciting to watch and we were making it incredibly hard for NBHC to break through our defensive line. **Kadi, Isabelle, Samara, Isabelle** and **Tess** were strong in defence and prevented NBHC scoring. **Isabella's** work rate throughout the game was so consistent and **Olivia, Cora** and **Sasha** were decisive in making runs up the field into the attacking area where we were making progress for shots on goal. Despite our huge efforts, NBHC scored another 2 goals, but our team really made it hard for them.

I have no doubt that lessons have been learned and PPS will come back stronger in our next football match. A huge well done to all those involved and many congratulations to the girls for their determination and teamwork throughout the game. **Anna** was awarded the **player of the match** for her hard work throughout the game, a huge well done to her!

U12/13 Football vs Thames Christian College



Portland's combined Year 7 and 8's put on a goal-fest at Falcon Park on Tuesday afternoon, away to Thames Christian College. This was the first time these year groups had been combined and it was going to be interesting to see how they gelled as a team. Thames had a couple of strong attacking players but were vulnerable at the back and Portland were soon able to open their scoring account through **Dexter**, who shot powerfully past the keep from just inside the area. He then followed up with a similar goal to double Portland's lead and just before half time, made it a first half hat-trick.

In the second half, PPS made some substitutions and continued to dominate the game. **Spike** added a fourth to the family tally and further goals were scored by **Taishi** who had moved up to right midfield, and **Enzo**, who was playing up front after starting on the left. **Humphey** moved back to defence but continued to pose a significant threat moving forward. There was plenty of solid defending from **Nate**, as usual, and both **Joe** and **Mark** made excellent contributions in midfield. **Joey** was very solid on the left; he too moved up to left midfield after starting as fullback.

Overall, this was a great team effort and PPS were able to really enjoy their attacking football.
Man-of-the-match: **Dexter**.

Senior Boys' House Football Tournament

The World Cup in Qatar was completely forgotten amid the anticipation and excitement of the Y10 and 11 Senior House Football tournament. Unfortunately, the weather that morning was wet enough, on top of the substantial rain of late, for Regent's Park to shut their pitches. Portland Place was not to be deterred and after a decent patch of ground was found on Cumberland Green, a make-shift pitch was marked out, and the tournament went ahead as scheduled.

The players were organised into their respective houses and the tournament began, using a round-robin format, where each house was to play each other once in a 10-minute game, with the winning house accumulating the most points and goals from their three matches.



Round 1

Game 1: Cavendish 1, Devonshire 0

Lawton claimed the only goal of this opening encounter to get his house off to the best of starts. This was a fast-paced match with clear chances few and far between.

Game 2: Langham 0, Wigmore 1

James has a knack of getting into some good positions and he opened Wigmore's account after beating **Muhammad** one-on-one. Langham may have considered themselves to be favourites and were disappointed with this early loss.

Round 2

Game 3: Cavendish 0, Langham 1

Langham bounced back from their loss with a hotly contested victory over Cavendish thanks to a goal from **Jessy**. It was clear that the team was starting to gel and some of their passing was a joy to behold.

Game 4: Devonshire 0, Wigmore 0

A score-bore this was not, with both teams coming close to breaking the deadlock. In the end, Wigmore were satisfied with a point, meaning they were leading the way on points after two games

Round 3

Game 5: Cavendish 0, Wigmore 1

Kai slotted home to give Wigmore the lead and put them in an unassailable position with just one match remaining. Cavendish worked hard for an equaliser but could not break down Wigmore's defence.

Game 6: Devonshire 0, Langham 3

A thumping victory over winless Devonshire was not enough to change the outcome as **Jessy** netted twice to make him the tournament top scorer. An own goal from the reds compounded their misery.

This was a highly enjoyable tournament played very competitively, with some of the best football seen all term on display. Conditions were not ideal, so it was especially pleasing to see Portland's 10 and 11's play with such commitment, enthusiasm and quality.

Sports report



Results Table	Wins	Draws	Losses	Goals for	Goals against	Points
Wigmore	2	1	0	2	0	7
Langham	2	0	1	4	1	6
Cavendish	1	0	2	1	0	3
Devonshire	0	1	2	0	4	1



Girls U13/14 football vs Maida Vale

On a cold and windy Monday afternoon PPS's U13/14 girls football team took on Maida Vale school in a highly entertaining game of football. Maida Vale school took an early lead through their excellent right winger who proved to be a thorn in PPS's side all game. Despite an early set back the girls showed grit and determination to force themselves back into the game and found an equaliser through striker **Jazz** who powerfully drove the ball into the roof of the net. PPS battled well in defence and midfield and kept Maida Vale's chances to a minimum. PPS took a 2-1 lead when **Jazz** scored her second with a close-range low effort. Unfortunately, the girls couldn't hold their lead and Maida Vale's talented right winger scored a long-range effort to take the game to 2-2 at half time.

In the second half PPS unfortunately did not start well and Maida Vale scored 2 quick fire goals to take a 4-2 lead just 5 minutes into the second half. The girls kept fighting for possession and started to make more accurate and well weighted passes as they searched for a goal, but Maida then scored a 5th against the run of play. PPS didn't give up and scored from a brilliant counter-attack: a tackle was made in defence, and three passes later **Marta** found herself in the opposition box placing the ball into the bottom corner. With 5 minutes left the girls kept working hard but Maida Vale managed to score one more to take a 6-3 win.

This was a very positive performance for PPS. Out of possession the girls made some great tackles and showed high energy levels in their marking and tracking, PPS also created a number of chances and had more possession of the ball. Maida Vale's right winger scored 4 goals and the girls found out that she is currently having trials for Arsenal. Our girls did a fantastic job defending against her – particularly **Olivia** and **Jazz** who chased her down and made important tackles on a few occasions. **Yasmin** made many strong tackles and clearances in defence; **Marta** absolutely ran her socks off in midfield and scored a well taken goal and **Kadi** made some excellent saves as goalkeeper.

Player of the match goes to **Jazz** who scored 2 excellent goals and put in a superb all-round performance.

Basketball Club



BASKETBALL CLUB

Thursdays 3.50-5.15pm

6-week block from:

**Thursday 1st December to
Thursday 26th January**

**Venue: Church Street Community
Leisure Centre**

**Boys and girls of all ages and
abilities are welcome to attend.**

**If you want to sign-up speak to a
member of the PE team!**

The PE department is delighted to offer a 6-week basketball club which will begin next Thursday and run either side of Christmas, with the final session on the 26th of January. This will be held at the Church Street Community Leisure Centre in St John's Wood.

The club is open to all ages and abilities and requires parents to complete the sign-up slip emailed home earlier this week. Pupils will be bussed to and from the venue. If any extra information is required, please contact a member of the PE team.



Next Week's Clubs and Fixtures

Monday 28th Nov

Year 8 Boys' football vs Radnor House, Away, 2.15pm, return 4.15pm

Year 7 & 8 Girls' football vs Radnor House, Away, 2.15pm, return 4.15pm

Table tennis club, PPS Hall, 1.10-1.45pm

Tuesday 29th Nov

Year 6 & 7 Boys' football vs North Bridge House Hamstead, Regent's Park, 2.00pm, return 3.45pm

Year 9, 10, 11 Girls' House Football Tournament, Indoor at Church Street Leisure Centre, 11.05 – 1.00pm

Weight training club, PPS changing rooms, 12.50-1.30pm

Football Club, Westway Sports Centre (transport provided) 3.50pm – 5.30pm

Wednesday 30th Nov

Year 10 & 11 Boys' Football vs Radnor House, Regent's Park, 2.15pm, return 3.45pm

Running club, Regent's Park, 12.50pm – 1.20pm

Fencing club, PPS Hall, 4.00pm-5.00pm

Thursday 1st Dec

Year 10 Boys' football vs Radnor House, Home, 2.15pm, return 3.45pm

Year 8 Netball vs Fairley House, Away, 2.00pm-3.00pm

Year 6 and Year 7 & 8 Boys' Football vs Abercorn, Paddington Recreation Ground, 4.00pm, return 4.25pm

Dance Club, Rm 11, 12.50pm-1.30pm

Basketball Club, Church Street Leisure Centre, 4.00pm-5.15pm

Friday 2nd Dec

Y9 girls' football vs Radnor House, 2.00pm, return 4.15pm

Y9 boys' football vs Radnor House, away, 2.15pm, return 4.15pm

Enrichment—Second Half of Autumn Term

Activity	Staff	Room
Badminton	SRI	PE Changing Rooms at 13:50
3D Design	DWO & CHU	B1
Climbing	WBR & BSO	Room 1 at 13:30
Drawing & Calligraphy	LDE & CFL	Art Studio
Fencing	RLE & AZE	PP Hall—meet PP Changing Rooms 13:50
Glee Club	AJU & CBO	Drama Studio
Hairdressing	DBL & CMH	Science Lab 3
Horse Riding	CBY & AIS	Meet PE Office at 13:30
Humanities Highlights	KOL, PLE & MTH	Room 10
Lego Design Club	TTC & TLA	Room 11
London Zoo	ECO & TNO	Offsite
Mad Scientist!	HSI & TTO	Science Lab 1
Netball	TMA & KPA	Meet PP Changing Rooms at 13:50
Photography Skills	PZA, DFL, CBI	R34
Poetry Slam	SSA, LVW, BCA	Library
Senior Football	JKU & LST	Meet PP Changing Rooms at 13:50
Yoga & Meditation	JWO & MMC	Room 22

Clubs from September

Day	Time	Activity	Staff	Location	Year Groups
Mon	12:50-13:50	Table Tennis Club	JKU	PP Hall	All
Mon	12:50-13:30	KS4 Design Drop-In Clinic	DWO	B1	10 & 11
Mon	12:50-13:45	String Ensemble	R H'white	R1	All
Mon	12:50-13:50	Chinese Club	TLA	G33	All
Mon	13:10-13:45	Chemistry Revision Club	HSI	Science Lab 2	10 & 11
Mon	13:15-13:40	Board Games	DFL & ECO	R11	6-9
Mon	15:45-17:00	KS4 Design Drop-In Clinic	DWO	B1	10 & 11
Tue	12:50-13:30	KS3 Design Club	DWO	B1	8 & 9
Tue	12:50-13:50	Drawing & Calligraphy Club	NHI	B3	6 & 7
Tue	12:50-13:45	PPS Choir	SHI & CBO	R1	All
Tue	12:50-13:50	Weight Training Club	SRI	Boys Changing Room	All
Tue	13:10-13:45	Physics Club	WBR	Science Lab 3	10 & 11
Tue	16:00-17:00	KS4 GCSE Art Club	LDE	Art Studio 1	10 & 11
Tue	15:45-17:00	KS4 Design Drop-In Clinic	DWO	B1	10 & 11
Tue	15:50-17:30	Football Club	tbc	Westway Sports Centre	All
Wed	12:50-13:30	KS4 Design Drop-In Clinic	DWO	B1	10 & 11
Wed	12:50-13:45	Music Theory Club	ZBO	R42	All
Wed	12:50-13:50	Russian Club	PZA	R24	All
Wed	12:50-13:45	Percussion Ensemble	J Morrison	R2	All
Wed	12:50-13:50	Running Club	LST	Regents Park	All
Wed	15:50-16:50	Extreme Dance London	External XDL Coach	R11	All
Wed	15:45-17:00	KS4 Design Drop-In Clinic	DWO	B1	10 & 11
Wed	16:00-17:00	Fencing Club	Fencing coach	PP Hall	All
Thurs	12:50-13:45	Woodwind Ensemble	J Slack	R1	All
Thurs	12:50-13:30	KS3 Drama Club	TNO	Drama Studio	6-9
Thurs	12:50-13:50	Dance Club	CBY	R11	All
Thurs	12:50-13:50	French & Spanish Beginner	FSY	G33	6—9
Thurs	13:15-13:45	Biology Club	RLE	Lab 2	10 & 11
Thurs	13:15-13:45	Spanish GCSE Club	CFL	G33	10 & 11
Thurs	16:00-17:00	PPS Chamber Choir	CBO	R1	By audition
Thurs	16:00-17:00	Art Club	TMO/LDE	Art 1 & 2	All **
Fri	12:50-13:45	Brass Ensemble	W Brown	R2	All
Fri	13:15-13:45	French Bilingual Club	TLA	B3	7 – 9
Fri	12:50-13:50	Japanese	Yekta	R24	7 – 9
Fri	12:50-13:30	KS4 Design Drop-In Clinic	DWO	B1	10 & 11
Fri	15:45-17:00	KS4 Design Drop-In Clinic	DWO	B1	10 & 11

** by invitation only for KS3, Art Scholarship holders must attend

Portland Place School

56-58 Portland Place
London W1B 1NJ
Tel: 020 7307 8700
(Main Switchboard)

GPS Building:
143-149 Great Portland Street
London W1W 6QN

admin@portland-place.co.uk
www.portland-place.co.uk

Term Dates

Academic Year 2022/2023

Autumn Term 2022

Staff Inset (closed to students)	Wednesday 31 August – Thursday 1 September 2022
Induction (new students)	Friday 2 September 2022
Term Starts	Monday 5 September 2022
Half term	Monday 17 October – Friday 28 October 2022
End of term	Friday 16 December 2022
Christmas holiday	Monday 19 December 2022 – Friday 6 January 2023

Spring Term 2023

Staff Inset (closed to students)	Monday 9 January 2023
Term Starts	Tuesday 10 January 2023
Half term	Monday 13 February – Friday 17 February 2023
End of Term	Friday 31 March 2023
Easter holiday	Monday 3 April – Friday 21 April 2023

Summer Term 2023

Staff Inset (closed to students)	Monday 24 April 2023
Term Starts	Tuesday 25 April 2023
Bank Holiday	Monday 1 May (school closed)
Coronation Bank Holiday	Monday 8 May (school closed)
Half term Holiday	Monday 29 May – Friday 2 June 2023
End of Term	Friday 7 July 2023



Portland
Place
School



Thank you for reading

FOLLOW US



@PortlandPlaceSchool



@PortlandPlaceHD



Portland Place School